



# G-I-N

## CONFERENCE

### *Philadelphia*

PENNSYLVANIA U.S.A.

27  
SEPTEMBER  
30  
2016



## Conference Programme

Individualised Guidelines and Clinical Performance Measurement in an Era of Personalised Medicine



# Global Evidence Summit

Using evidence. Improving lives.



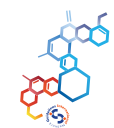
13-16 September 2017 | Cape Town, South Africa  
[globalevidencesummit.org](http://globalevidencesummit.org) | #GESummit17

## Promoting evidence-informed decision-making worldwide



### Table of Contents

Welcome Letter	4
Letter from the Executive Officer	5
Board of Trustees	6
Scientific Committee	6
Acknowledgements	7
General Information	8
University of Pennsylvania Floor Plans and Map (Houston Hall, Irvine Auditorium, Cohen Hall)	11
Our Hosts	16
Speakers	18
Programme Information	24
G-I-N Regional and Working Group Meetings	42
Grant Recipients	43
Poster Presentations	44
Exhibitor Directory	52



# Welcome to

Dear fellow G-I-N members, colleagues, and friends,

On behalf of the Board of Trustees of the Guidelines International Network (G-I-N), the local hosts (American College of Physicians, ECRI Institute, Penn Medicine), and the Scientific Committee, we welcome you to Philadelphia for G-I-N 2016, the 13th G-I-N Conference.

The theme for G-I-N 2016 is “Individualised Guidelines and Clinical Performance Measurement in an Era of Personalised Medicine.” We have an exciting selection of plenaries, workshops, panel sessions, and abstracts planned for you to learn, exchange ideas, and engage with others in the field. Conference participants will have the opportunity to discuss and promote the need to align guidelines and performance measures, while taking into account that guideline recommendations and guideline-based performance measures respect the individuality of patients which is based on biological, psychological, and social factors. In addition to focusing on the conference theme, the plenaries will also cover innovations in guideline development, implementation, and technology. There will be ample opportunities to network with fellow attendees from all over the globe and we encourage you to connect with old friends and make some new ones while you are here.

Philadelphia, founded in 1682, is a historical, cultural, educational, and economic hub in the United States. It is the only World Heritage City in the United States and home of many firsts: first library, first hospital, first medical school, first Capitol, first stock exchange, to name a few. The city played an instrumental role in the American Revolution as a meeting place for the founding fathers, declaration of independence, signing of the constitution, and the civil war. The City of Brotherly Love, commonly called “Philly”, offers a plethora of museums, parks, art and other attractions, world class restaurants, music, theatre, and more.

G-I-N is a network, and there would be no G-I-N without you, so we thank you for your participation in G-I-N 2016. We look forward to seeing you and hope that you enjoy the conference and everything that the City of Philadelphia has to offer.

Sincerely,



Ina Kopp  
Chair, G-I-N Board of Trustees  
Co-President G-I-N 2016



Amir Qaseem  
Member, G-I-N Board of Trustees  
Co-President G-I-N 2016



Christine Laine  
Chair, Scientific Committee G-I-N 2016

# Philadelphia!

Dear G-I-N members and colleagues,

It is a real pleasure to welcome you all on behalf of the Guidelines International Network Executive Committee and the Secretariat to the historic city of Philadelphia for G-I-N's 13th annual conference. Our annual conference is central to our network and we have collaborated with three local hosts, American College of Physicians, ECRI Institute, and Penn Medicine, to bring you the best that Philadelphia has to offer.

The G-I-N network has continued to evolve and grow over the past year and we will have a record number of G-I-N Working Group and Regional Community meetings taking place during the conference. We have followed the successful pattern from our previous two conferences and have included these sessions in the programme in order to maximise the time for the important collaborative work of the Working Groups and networking opportunities that the Regional Communities bring. If you would like to find out more about our groups and learn more about some of the collaborative work they produce, please come along to the GINtro session before the Welcome Reception on Tuesday, September 27th and take the opportunity to follow up with the group and community leaders throughout the Reception.

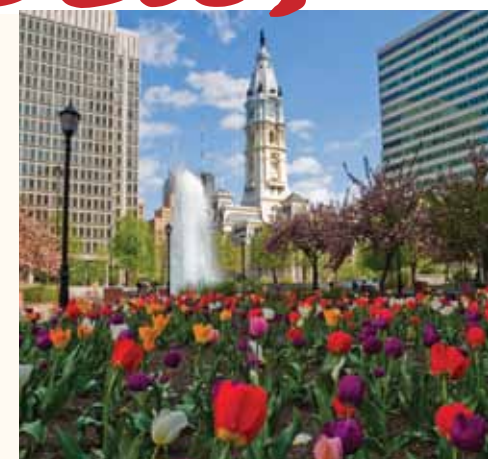
As has been our tradition for a few years, we will be offering a one-off discounted annual membership fee to anyone who applies for G-I-N membership during the conference, so drop by the G-I-N booth and speak to Anne Docherty, the G-I-N Secretary, who can guide you through the process.

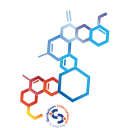
I hope you find the conference stimulating and informative and come away from it with an enriched personal network and lots of ideas, coupled with the motivation to implement them!

Happy Networking and Connecting!



Elaine Harrow  
Executive Officer





About the Guidelines International Network

Our mission is to lead, strengthen and support collaboration in guideline development, adaptation and implementation. As a major player on the global healthcare quality stage, G-I-N facilitates networking, promotes excellence and helps our members create high quality clinical practice guidelines that foster safe and effective patient care.

Our networking role is enhanced through annual conferences, region-specific communities and topic-specific working groups in which participants exchange knowledge and improve methodology. We welcome your participation in our vibrant community and are delighted to share, through our web portal, a wide variety of support tools and publications to enhance guideline development and knowledge transfer.



G-I-N 2016 Scientific Committee

Christine Laine, MD, MPH,  
2016 Scientific Committee Chair

Jos Kleijnen, MD,  
2016 Scientific Committee Vice Chair

Brian Alper, MD, MSPH, FAAFP  
Michael Barry, MD, MACP  
Helen Burstin, MD, MPH, FACP  
Vivian Coates, MBA  
David Goldmann, MD, FACP  
Fergus Macbeth, MA, DM, FRCP, FRCR  
Patrick Okwen Mbah, MD  
Jörg Meerpohl, MD  
Bernadette Melnyk, PhD, RN, CPNP/PMHNP, FAAN  
Mary Nix, MS, MT (ASCP), SBB  
Susan Norris, MD, MPH, MS  
Monika Nothacker, MD, MPH  
Amir Qaseem, MD, PhD, MHA, FACP  
Corinna Schaefer, MA  
Holger Schünemann, MD, PhD, MSc, FRCP (C), FACP  
Britta Tendal, PhD, MPH  
Craig Umscheid, MD, MSCE, FACP  
Jutta Von Dincklage, MA

G-I-N Board Of Trustees

Chair: Ina Kopp, Germany  
Vice-Chair: Sue Phillips, Australia  
Treasurer: Duncan Service, United Kingdom

**Members**  
Amir Qaseem, United States  
Lubna A. Al-Ansary, Saudi Arabia  
Susan Huckson, Australia  
Sonja Kersten, The Netherlands  
Per Olav Vandvik, Norway  
Craig Robbins, United States  
Stephanie Chang, United States  
Holger Schünemann, Canada  
Joan Vlayen, Belgium

Acknowledgements

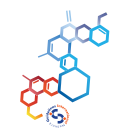
G-I-N 2016 Conference Sponsors

The Guidelines International Network gratefully acknowledges the support of the 2016 Annual Conference from our Sponsors:

This conference is partially funded through a **Patient-Centered Outcomes Research Institute (PCORI)** Eugene Washington PCORI Engagement Award (EAIN-3437).

Funding for this conference was made possible in part by Grant Number 1R13HS024827-01 REVISED from the **Agency for Healthcare Research and Quality (AHRQ)**. The views expressed in written conference materials or publications and by speakers and moderators do not necessarily reflect the official policies of the Department of Health and Human Services; nor does mention of trade names, commercial practices, or organisations imply endorsement by the U.S. Government.





# General Information



## Abstracts

Abstracts for plenary, parallel, and poster sessions are included in the Abstract Book, which is available for download from the conference website: [www.ginconference.net](http://www.ginconference.net)

## Annual General Meeting

Members are strongly encouraged to attend the Annual General Meeting (AGM) on Tuesday, September 27 from 4:45 pm – 6:00 pm in the Bodek Lounge. Registration for the AGM begins at 4:15 pm in the Bodek Lounge.

## Conference Registration / Information Desk

The G-I-N Annual Conference Registration/Information Desk will be located in Houston Hall – East Lobby. The hours of operation are as follows:

Tuesday, September 27	7:00 am – 6:30 pm
Wednesday, September 28	7:00 am – 6:00 pm
Thursday, September 29	7:00 am – 6:00 pm
Friday, September 30	7:00 am – 1:00 pm

## Evaluations

At the end of each day, during the G-I-N Conference, you will be able to complete an evaluation of the day's sessions. This will be done through the conference app.

Shortly after the conference, G-I-N will email a link to the evaluation form. G-I-N values your feedback and you are strongly encouraged to complete the evaluations as this will assist in developing future conferences. Anyone who does not have access to the app will be able to fill out the evaluation via Survey Monkey. The link will be added to the conference website at the end of the conference.

## Exhibits

Educational and informational exhibits will be available for viewing during the Annual Conference and representatives will be on hand to answer questions.

Wednesday, September 28	7:30 am – 6:00 pm
Thursday, September 29	7:30 am – 5:30 pm
Friday, September 30	7:30 am – 10:30 am

## Industry Supported Events

### Wednesday, September 28 - Lunch Symposium 1:00 pm – 2:00 pm – Terrace Room (Cohen Hall)

Limit: 40 attendees

Title: Doctor Evidence Lunch & Technology  
Showcase at G-I-N 2016

### Thursday, September 29 - Lunch Symposium 12:30 pm – 1:30 pm – Terrace Room (Cohen Hall)

Limit: 40 attendees

Title: DynaMed Plus: Unique Value for Developing,  
Updating and Disseminating Guidelines

## Meeting App

G-I-N is pleased to announce the 2016 Annual Conference Meeting App! The App is exclusively available for registered attendees. To download the App onto your mobile device, search for the G-I-N 2016 in your respective App store. To start using the App, select "Create Account" and unlock the App using the following event code: GIN2016.

## Name Badges

Your badge serves as your admission to all meeting and social events. **You must wear your name badge at all times during the events. For security reasons, persons without badges will not be permitted to attend events.**

## Photography

Any photography, filming, taping, recording or reproduction in any medium including the use of tripod-based equipment of any of the sessions and/or posters presented at the Annual Conference without the express written consent of the Guidelines International Network is strictly prohibited. Exceptions to this policy include non-flash photography and audiotape recording - using hand-held equipment for strictly personal use, are permitted if not disruptive.

## Poster Presentations

G-I-N invites you to meet the authors of the accepted posters during the scheduled poster sessions which will be held in the Hall of Flags Balcony and the adjacent West Lobby. Both are located in Houston Hall.

Authors/Presenters please note: G-I-N will not be responsible for removing and/or returning posters. All posters not removed by 6:30 pm on the day of your poster presentation will be discarded.

## WIFI Access

There will be complimentary WIFI access throughout the conference space.

## Charging Stations

A secure mobile phone and charging station will be available and located in the registration area. Note, G-I-N is not responsible for any loss or damage to a device while in the charging stations.

*Sponsored by Kaiser Permanente.*

## Social

## Social Programme

You are cordially invited to join the G-I-N Board of Trustees and Local Organising Committee at the following events:

### Welcome Reception Tuesday, September 27 Penn Museum

6:30 pm – 8:00 pm

The University of Pennsylvania Museum of Archeology and Anthropology is an internationally renowned educational and research institution dedicated to the understanding of cultural diversity and the exploration of the history of humankind. *Sponsored by Penn Medicine.*

### Gala Networking Event Thursday, September 28 National Constitution Center

7:00 pm – 10:30 pm

The National Constitution Center is a nonprofit, nonpartisan institution devoted to explaining the United States Constitution and what it represents.

Scheduled shuttles will be provided to the National Constitution Center departing from the Sheraton University City Hotel at 6:30 pm with return shuttles beginning at 9:30 pm.

The dress code for both events is casual chic.

*Reminder: Please remember to wear your conference badge to the Gala Networking Event.*

## Social Media

Find out what is happening live at the meeting by following @GINConference. We want to hear from you so join in on the conversation by tagging your tweets with #GIN2016. If you are sitting in one session and wondering what you're missing in another why not tweet about it?

## Speed Networking Session

The Implementation Working Group is offering a first come-first served speed networking event featuring brief one-on-one discussion with an implementation coach, an implementation planning informational package, and informal interaction with other implementers. This session is being held on Thursday, September 29, 2016 from 12:30 pm – 2:00 pm in the Franklin Room in Houston Hall.



**Learn how AHRQ's programs and tools can help you develop and implement guidelines!**

Stop by Booth **#14** to learn about:

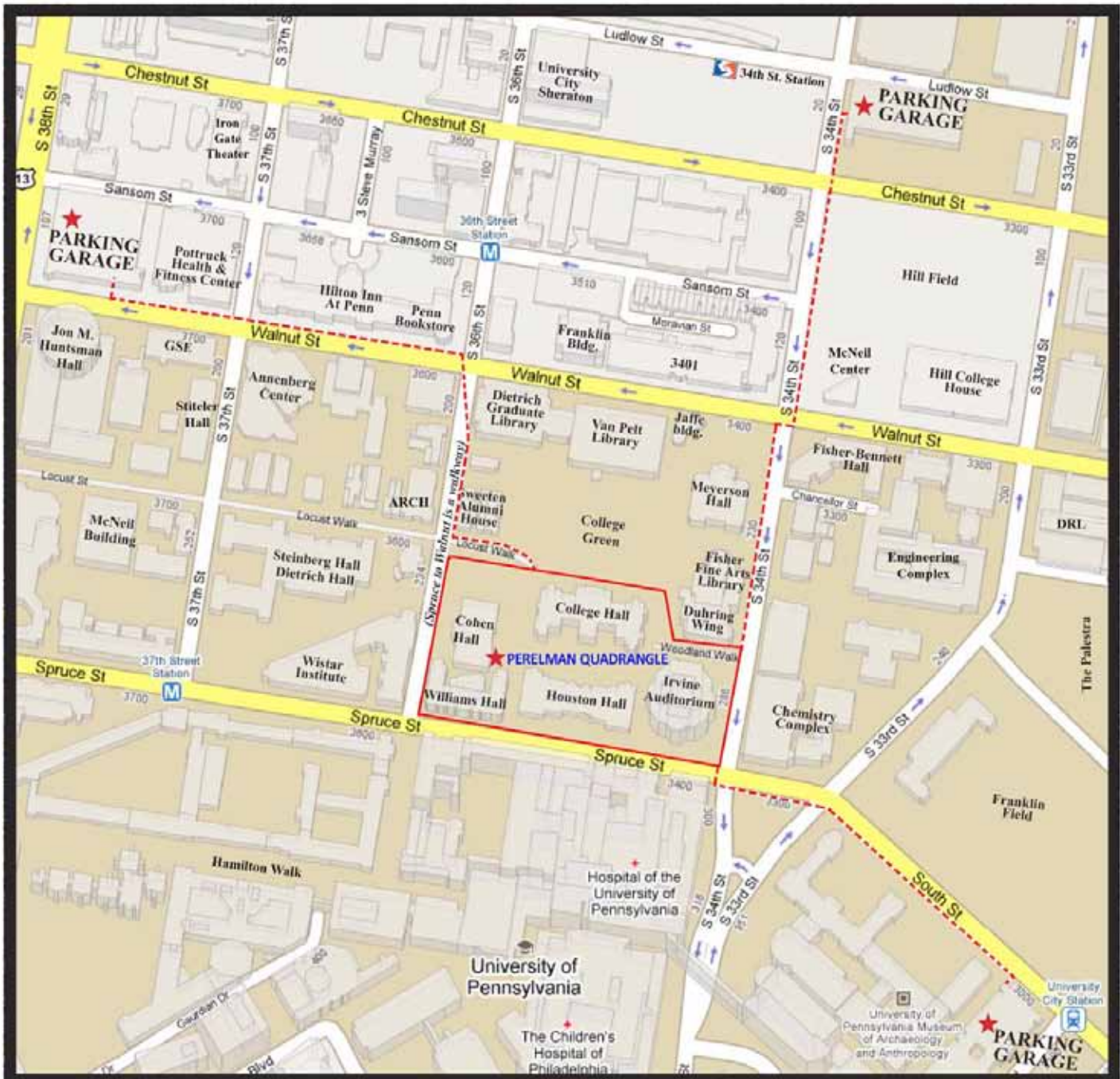
- AHRQ PCOR Dissemination and Implementation Initiative
- The National Guideline Clearinghouse and National Quality Measures Clearinghouse
- Evidence-Based Practice Center Program
- U.S. Preventive Services Task Force
- And much more!

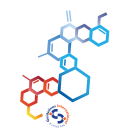
[www.ahrq.gov](http://www.ahrq.gov)



# Area Map

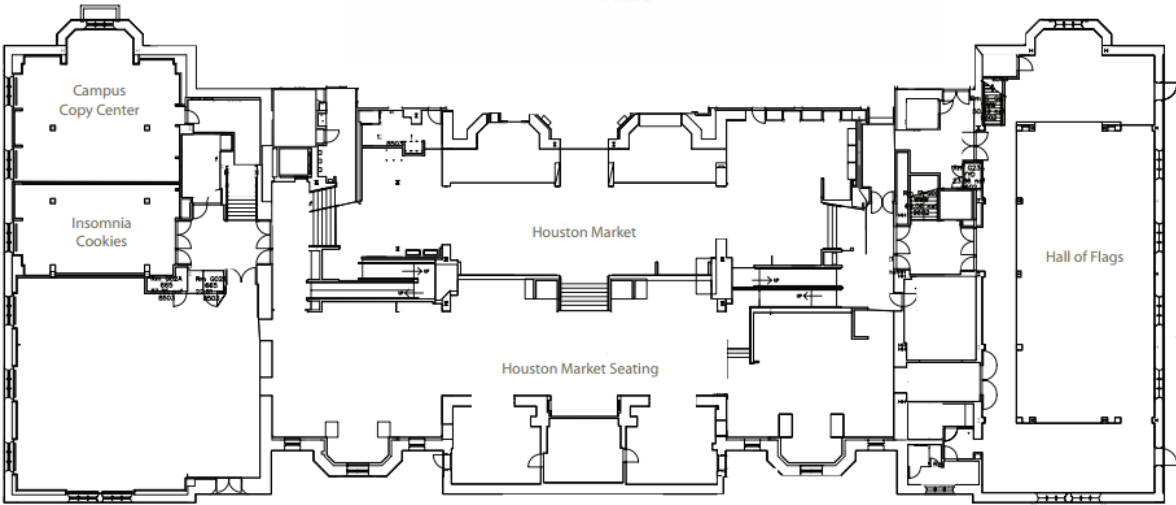
University of Pennsylvania



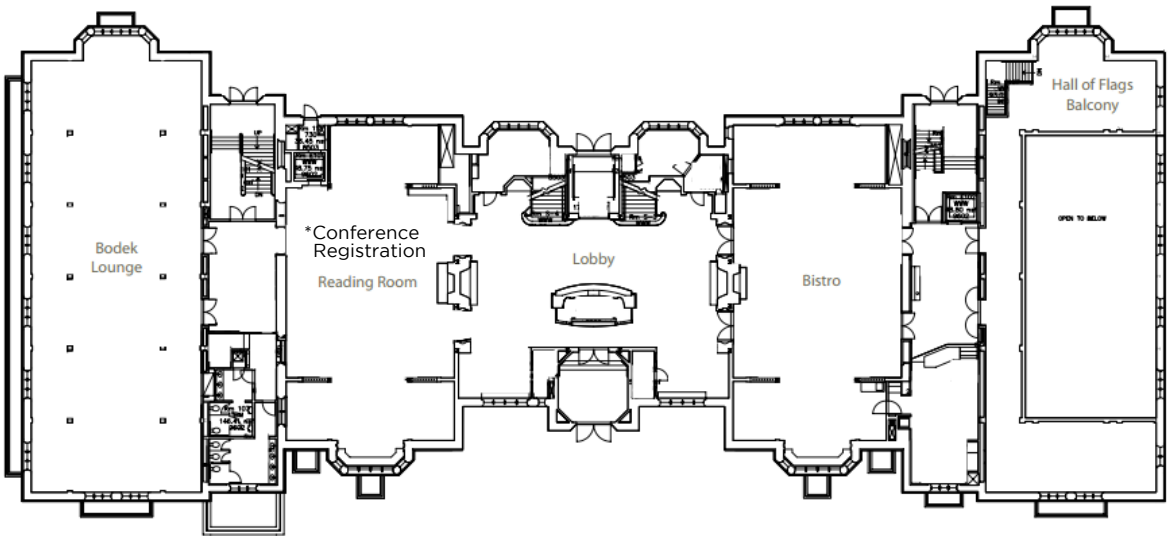


# Floor Plan

Houston Hall (HH)

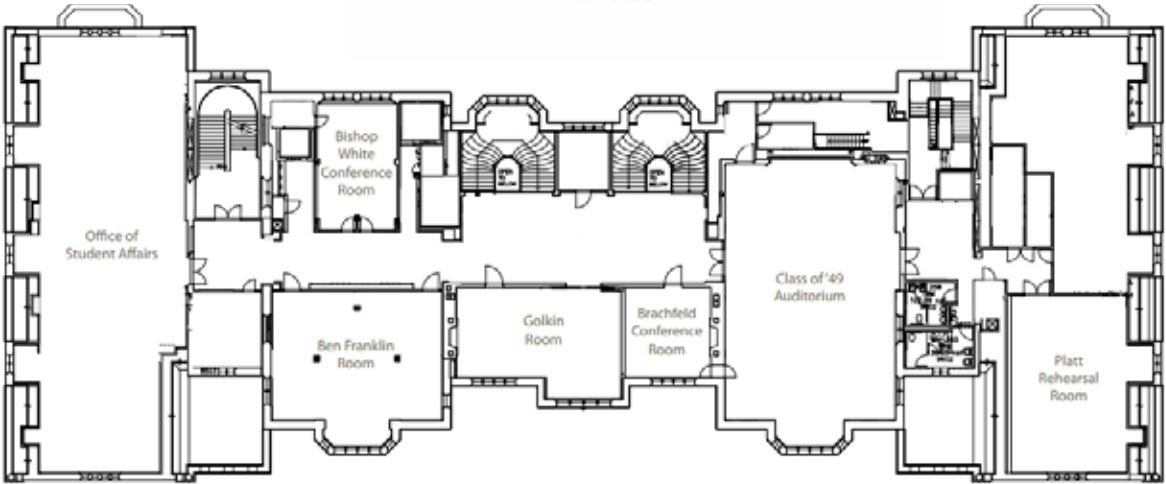


Ground Floor

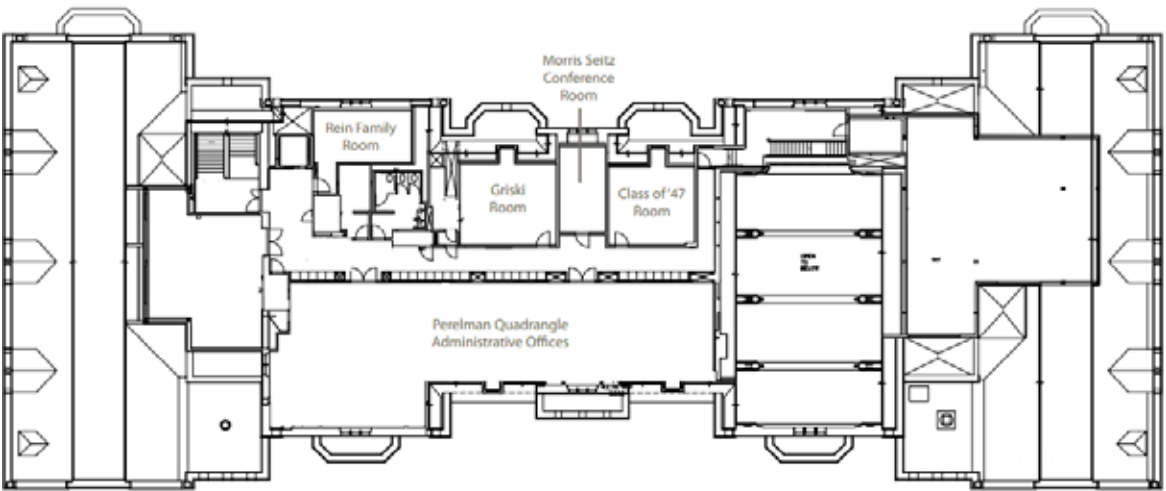


First Floor

Houston Hall (HH)



Second Floor

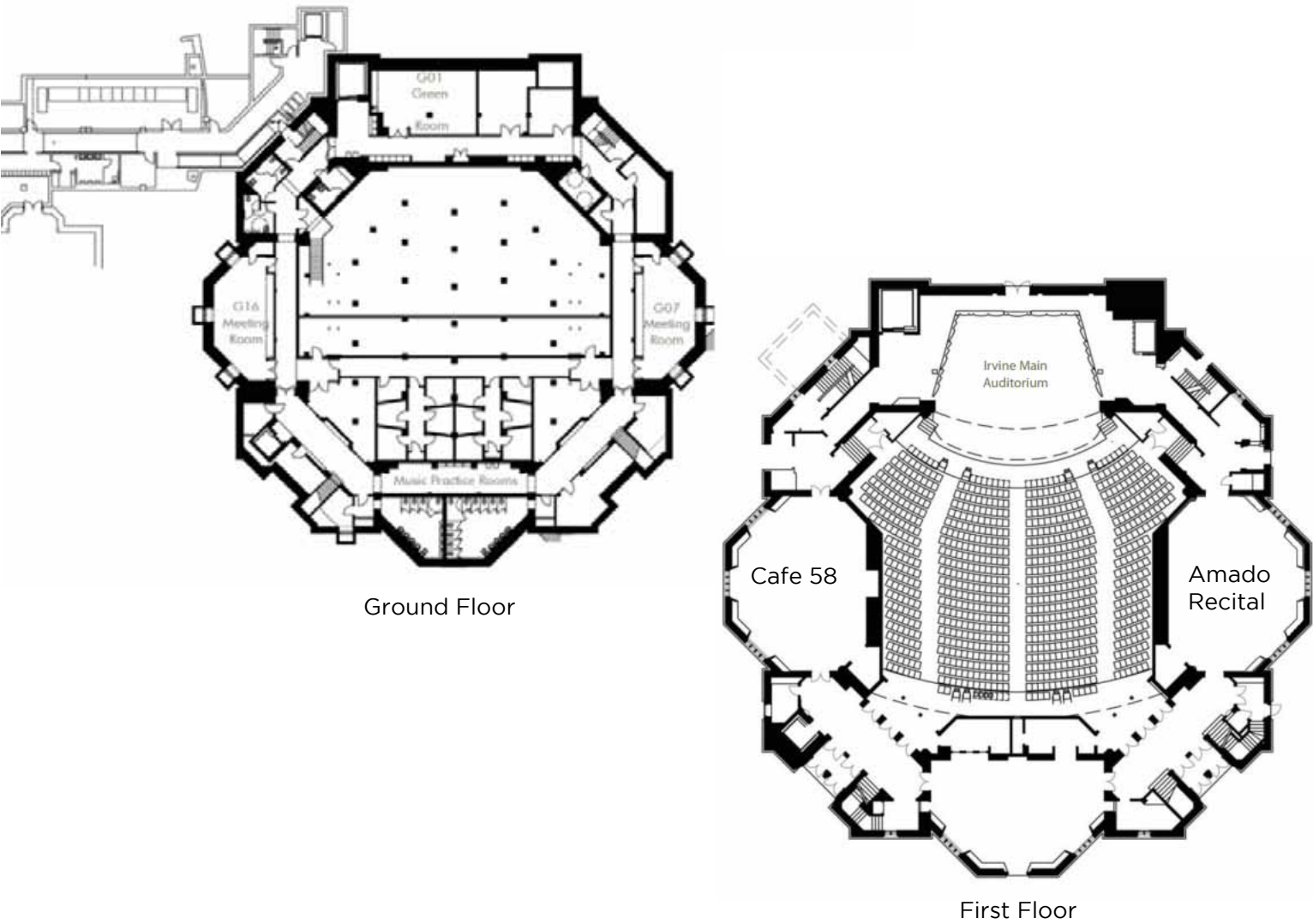


Third Floor

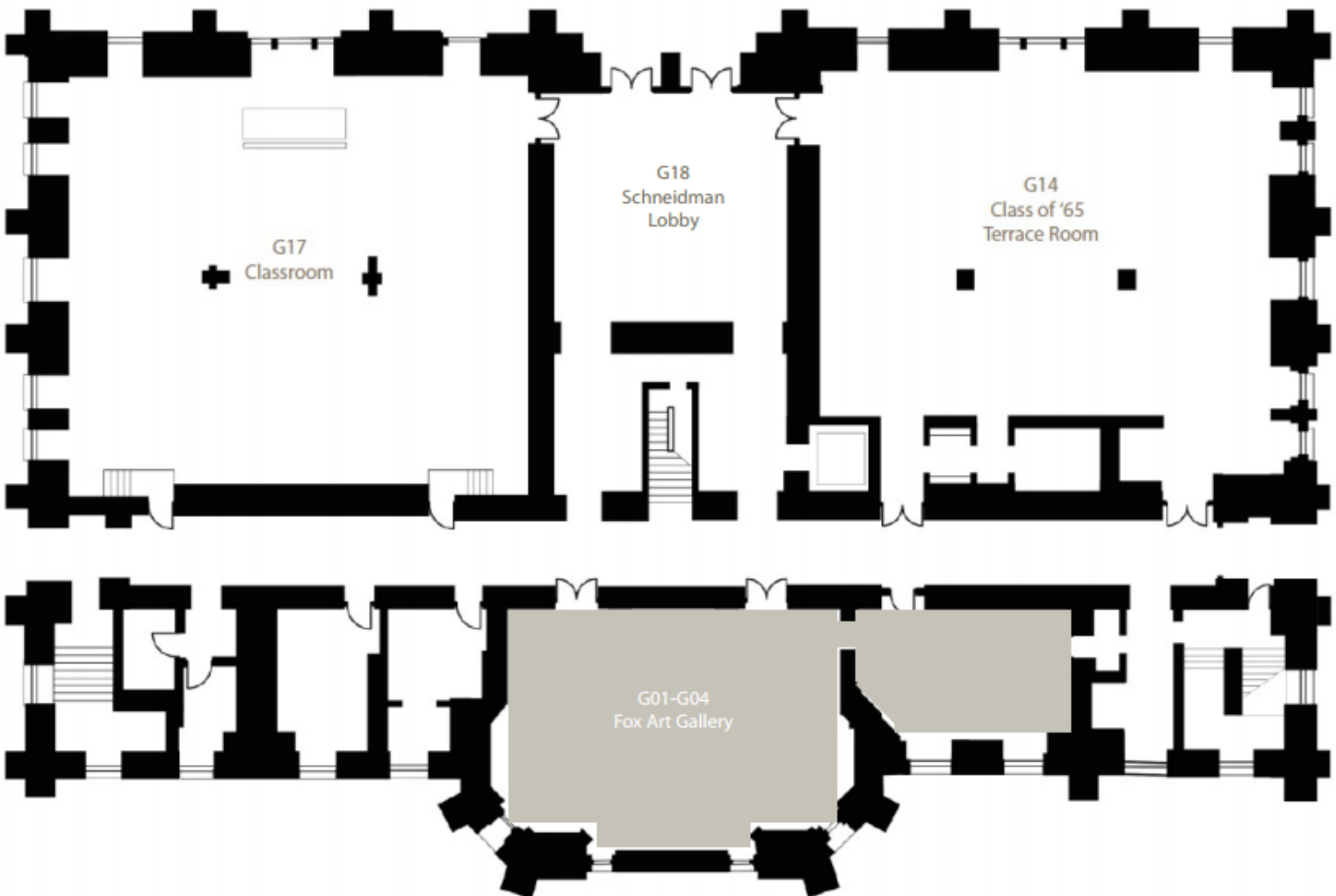


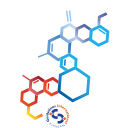
# Floor Plan

Irvine Auditorium (IR)



Claudia Cohen Hall (CH)





The three local host organizations American College of Physicians, ECRI Institute, and Penn Medicine, are committed to delivering an academically robust conference that provides an opportunity for attendees to improve their knowledge of best practices in evidence-based guideline development and implementation and foster an environment that encourages professional growth among a broad range of participants.



American College of Physicians (ACP) is a national organization of internists, the largest medical-specialty organization, and second-largest physician group in the United States. ACP's 148,000 members include internists, internal medicine subspecialists, medical students, residents, and fellows. ACP was founded in 1915 to promote the science and practice of medicine, and since then has supported internists by sharing the most updated medical knowledge and offering top-notch educational resources. ACP is a pioneer in evidence-based medicine, and is one of the first U.S. organizations to produce clinical practice guidelines. Currently ACP is one of the leading developers of high-quality evidence-based guidelines in the world. ACP staff supporting G-I-N 2016 include:

- Amir Qaseem, MD, PhD, MHA, FACP, Vice President, Clinical Policy
- Melissa Starkey, PhD, Senior Clinical Associate
- Kate Carroll, MPH, Clinical Policy Associate
- Trish Siemion, MS, Clinical Policy Coordinator



ECRI Institute, a nonprofit health services research organization, dedicates itself to bringing the discipline of applied scientific research to healthcare to discover which medical procedures, devices, drugs, and processes are best to enable improved patient care. As pioneers in this science for nearly 50 years, ECRI Institute marries experience and independence with the objectivity of evidence-based research. Strict conflict-of-interest guidelines ensure objectivity. Our more than 5,000 members worldwide include hospitals, health systems, public and private payers, U.S. federal and state government agencies, health clinics, patients, policymakers, ministries of health, associations, and accrediting agencies.

ECRI Institute has been an AHRQ-designated Evidence-based Practice Center since 1997 and currently collaborates with Penn Medicine's Center for Evidence-based Practice as the ECRI Institute-Penn Medicine EPC. ECRI has a wealth of experience with guidelines, serving as AHRQ's contractor to create, maintain, and enhance the National Guideline Clearinghouse™ (NGC™) and the National Quality Measures Clearinghouse™ (NQMC™). ECRI also is deeply involved with guideline development and implementation, providing customized methodology support for clinical practice guideline, clinical decision support and quality measure development

ECRI Institute PSO is listed as a federally certified Patient Safety Organization by the U.S. Department of Health and Human Services.

ECRI Institute staff for G-I-N 2016  
Vivian Coates, MBA, Vice President, Information Services and Health Technology Assessment

Jane S. Jue, MD, MSc, Senior Research Analyst, Evidence-based Practice Center and Health Technology Assessment Group

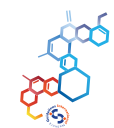
Laurie D. Menyo, Director, Public Relations and Marketing Communications



Penn Medicine is one of the world's leading academic medical centers, dedicated to education, research, and patient care. Penn Medicine includes the Perelman School of Medicine (founded in 1765 as the nation's first medical school, and consistently ranked among the top five medical schools in the U.S.) and the University of Pennsylvania Health System (the nation's first academic health system). The health system includes the Hospital of the University of Pennsylvania (consistently recognized as one of the nation's top 10 hospitals), as well as Pennsylvania Hospital (America's first hospital). The University of Pennsylvania Health System Center for Evidence-based Practice (CEP) was established in 2006 to support the quality, safety, and value of patient care at Penn by performing rapid systematic reviews to inform institutional decision making, translating evidence into practice through computerized decision support and clinical pathways, and providing education in evidence-based practice. CEP also collaborates with the ECRI Institute as the ECRI - Penn AHRQ Evidence-based Practice Center. Penn Medicine staff supporting G-I-N 2016 include:

Craig A. Umscheid, MD, MSCE, Associate Professor of Medicine and Epidemiology  
Vice Chair for Quality and Safety, Department of Medicine; Director, Center for Evidence-based Practice

Brian Leas, MS, MA, Research Analyst



## G-I-N Plenary Speakers



**Professor Mark Baker** is the Director of the Centre for Clinical Practice at NICE where he is responsible for the Clinical Guidelines Programme and advice on the use of medicines. He joined the staff of NICE in 2009 as Consultant Clinical Adviser to the Internal Guidelines Team and took up his current Director post in April 2012.

Mark qualified in Medicine in 1973 and has postgraduate qualifications in general medicine and public health medicine.

In a wide ranging career in the NHS, he has held the Director or Chief Executive posts at every level of the service. For much of the last twenty years he has been extensively involved in the development of NICE cancer guidance including the Cancer Service Guidance Programme, as chair of the guideline development groups on prostate cancer and lung cancer and in his current post. He has also held regional and national leadership positions in cancer services development.

In his academic career, he has also held professorial appointments at the Universities of Bradford, Leeds and York.

He is a Fellow of the Royal College of Physicians and, formerly, a Fitness to Practice Panelist for the General Medical Council.

Professor Baker is presenting in Plenary Panel 3 - Innovative Efficiencies in Guideline Development, Maintenance, and Adaptation: A Look to the Future, on Thursday, 29 September 2016 at 2:00 pm.



**Prof. Dr. med. Anke Bramesfeld, MD, MPH**, registered in Psychiatry and Psychotherapy, associated Professor in Public Health and Public Mental Health of Hannover Medical School. She is currently employed as scientific officer at the Joint Research Centre (JRC) in Ispra, Italy, the European Commission's in-house science service that is developing a voluntary European Quality Assurance Scheme for Breast Cancer Services. 2012-2015 AQUA-Institute for applied quality improvement and research in health care GmbH, Göttingen Germany; at that time commissioned with development and implementation of the mandatory quality assurance Programme of the German health care system. Before that, health services and system research with a focus on mental health at Hannover Medical School and Leipzig University. 2009-2010 Seconded National Expert to the European Commission's Directorate General for Health and Consumers, Luxembourg.

Dr. Bramesfeld is presenting in Plenary Panel 1 - Translating Guidelines to Performance Measures in an Era of Accountability on Wednesday, 28 September 2016 at 2:30 pm.

# Plenary Speakers



**Dr. Kate Goodrich** joined the Centers for Medicare and Medicaid Services in September of 2011 where she serves as Director of the Center for Clinical Standards and Quality (CCSQ). This Center is responsible for over 20 quality measurement and value-based purchasing programmes, implementation of the new Merit-based Incentive Payment System and the Improving Medicare Post-Acute Care Transformation Act, quality improvement programmes in all 50 states, clinical standards and survey and certification of all providers across the nation, and all coverage decisions for treatments and services for CMS. The Center budget exceeds \$1.3 billion annually.

Previously, Dr. Goodrich served as the Director of the Quality Measurement and Value-based Incentives Group in CCSQ where she oversaw the implementation of over 20 quality, value-based purchasing and public reporting programmes across multiple settings. She also co-lead an HHS-wide group to align quality measures across programmes, and more recently has worked with numerous private payers to align measures across the public and private sectors. From 2010 – 2011 she served as a Medical Officer in the office of the Assistant Secretary for Planning and Evaluation (ASPE) at DHHS where she managed a portfolio of work on comparative effectiveness research and quality measurement and improvement.

Dr. Goodrich is a graduate of the Robert Wood Johnson Clinical Scholars Program at Yale University where she received training in health services research and health policy from 2008-2010. From 1998 to 2008, Dr. Goodrich was on faculty at the George Washington University Medical Center (GWUMC) and served as Division Director for Hospital Medicine from 2005-2008 and was chair of the Institutional Review Board from 2004-2008. She went to medical school at Louisiana State University in Shreveport, LA, and completed her internal medicine residency and chief medical resident year at GWUMC. She continues to practice clinical medicine as a hospitalist and Associate Professor of Medicine at GWUMC.

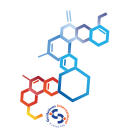
Dr. Goodrich is presenting in Plenary Panel 1 - Translating Guidelines to Performance Measures in an Era of Accountability on Wednesday, 28 September 2016 at 2:30 pm.



**Dr. Martin Kohn** is Chief Medical Scientist at Sentrian, which creates predictive analytic systems integrating home monitoring with longitudinal health data for patients with complex chronic diseases. The Sentrian system identifies patients that are likely to deteriorate to allow the care providers enough time to intervene to mitigate or prevent the deterioration, reducing avoidable hospitalisations.

Dr. Kohn is a board-certified emergency physician with over 30 years of practice and management experience. He is an alumnus of MIT, Harvard Medical School and NYU. He has been a healthcare executive, educator and congressional health policy advisor. Dr. Kohn is board-certified in Clinical Informatics, has published on clinical, technical and management subjects and speaks frequently on the role of "Big Data" in the transformation of healthcare. Previously, he was the Chief Medical Scientist for Care Delivery Systems in IBM Research developing analytic tools for healthcare, including the use of the Watson supercomputer.

Dr. Kohn is presenting in Plenary Panel 2 - Incorporating Alternative Forms of Evidence into Guidelines, on Thursday, 29 September 2016 at 8:30 am.



G-I-N Plenary Speakers



**Dr. Kevin Larsen** is a senior Medical Officer at the Centers for Medicare and Medicaid Services. He leads the CMS lean transformation and advises on health IT policy and care transformation. He previously served for 4 years as the Medical Director of Meaningful Use at the Office of the National Coordinator for Health IT, where he led ONCs work on quality policy, measurement and improvement, including clinical decision support and registries. Prior to working for the federal government he was Chief Medical Informatics Officer and Associate Medical Director at Hennepin County Medical Center in Minneapolis, Minnesota. He is also an Associate Professor of Medicine at the University of Minnesota. His research includes health care financing for people living in poverty, computer systems to support clinical decision making, and health literacy. In Minneapolis he was also the Medical Director for the Center for Urban Health, a hospital, community collaboration to eliminate health disparities.

Dr. Larsen is presenting in Plenary Panel 4 - Leveraging Technology to Promote Guideline Implementation, on Friday, 30 September 2016 at 10:30 am.



**Dr. Fergus Macbeth** recently retired from active clinical working as an oncologist. He also worked for the National Institute for Health and Care Excellence (NICE) for almost 10 years, first as Director of the National Collaborating Centre for Cancer, developing cancer guidelines for NICE and latterly, until his retirement, as Director for the Centre for Clinical Practice, responsible for NICE's wider clinical guidelines and quality standards Programmes. He served on the Board of Guidelines International Network (G-I-N) from 2011 to 2014. He still works part time as Mentor to NICE Fellows and Scholars and has recently chaired two guideline development groups. He has been Coordinating Editor of the Cochrane Lung Cancer Review Group for 5 years and is also joint Funding Arbiter for Cochrane, assessing issues of conflicts of interest across the organisation. He is currently Associate Director of the Wales Cancer Trials Unit, Cardiff and Honorary Professor at Cardiff University. He teaches for the UK Cochrane Centre and the Collaboration for Evidence Based Healthcare in Africa. He has published widely on lung cancer and on guideline related topics.

Dr. Macbeth is presenting in the Opening Plenary - Individualising Guidance in an Era of Personalised Medicine on Wednesday, 28 September 2016 at 9:00 am.



**Dr. Lawrence Mbuagbaw** is a public health physician, research methodologist and biostatistician. He works as assistant professor in the Department of Clinical Epidemiology and Biostatistics, McMaster University. His research interests are mother and child health, human immunodeficiency virus (HIV) care, health systems research, mHealth and health research methodology - with a focus on enhancing biostatistics and epidemiological techniques to improve health outcomes using pragmatic knowledge translation designs. He has authored over 80 peer reviewed publication with more that 10 systematic reviews and meta-analyses. He is an editor for the Cochrane Infectious Diseases Group and a member of the G-I-N Africa Steering Committee.

Dr. Mbuagbaw is presenting in Plenary Panel 4 - Leveraging Technology to Promote Guideline Implementation, on Friday, 30 September 2016 at 10:30 am.

Plenary Speakers



**Jane Noyes** is Professor of Health and Social Services Research and Child Health. She moved to Bangor University in 2005, having previously worked at Manchester, York, Keele and Salford Universities, and the National Heart and Lung Institute at the University of London.

Jane is interested in methodology, including: complex intervention development and evaluation, and qualitative and mixed method systematic review methodology. She is a Convenor of the Cochrane Qualitative and Implementation Methods Group and Co-Chair of the Cochrane Methods Executive. She has been actively involved in developing the methods for qualitative and mixed-method synthesis and incorporation of qualitative evidence in guidelines. Jane is currently working a WHO methodologist on a complex WHO guideline where few trials exist.

Jane also specialises in child health and social care research and cost consequences. Her research interests include acute care, complex care, long-term conditions and self-management, transition to adult services, young adulthood with disability, end of life care, and sibling and family care. She has growing interests in international maternal child health in lower and middle income countries, and reverse innovation. Jane is Editor of the Journal of Advanced Nursing. She is an enthusiastic supporter of leading children's charities in various high profile roles.

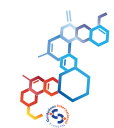
Professor Noyes is presenting in Plenary Panel 2 - Incorporating Alternative Forms of Evidence into Guidelines, on Thursday, 29 September 2016 at 8:30 am.



**Douglas K. Owens, MD, MS**, is the Henry J. Kaiser, Jr., Professor at Stanford University, where he is a professor of medicine, and, by courtesy, of health research and policy, and of management science and engineering. He is director of the Center for Health Policy in the Freeman Spogli Institute for International Studies and director of the Center for Primary Care and Outcomes Research (PCOR) in the Department of Medicine. He is a general internist and associate director of the Center for Innovation to Implementation at the Veterans Affairs Palo Alto Health Care System. His research focuses on technology assessment, cost-effectiveness analysis, evidence synthesis, and methods for clinical guideline development. Dr. Owens chaired the Clinical Guidelines Committee of the American College of Physicians. He also served on the United States Preventive Services Task Force (USPSTF), which creates national guidelines on prevention services. Recently, he has helped lead the development of national U.S. guidelines on screening for HIV, hepatitis C, hepatitis B, lung cancer, colorectal cancer, breast cancer, and use of aspirin and statins to prevent cardiovascular disease.

Dr. Owens is presenting in the Opening Plenary - Individualising Guidance in an Era of Personalised Medicine on Wednesday, 28 September 2016 at 9:00 am.





G-I-N Plenary Speakers

Plenary Speakers



**Paul G. Shekelle, M.D., M.P.H., Ph.D.** In addition to currently serving as a Staff Physician at the West Los Angeles Veterans Affairs Medical Center, Dr. Shekelle directs the VA Evidence Synthesis Programme there. Dr. Shekelle also has served as the Director of the Southern California Evidence-based Practice Center for the RAND Corporation since 1997. He is a Professor of Medicine at the University of California, Los Angeles (UCLA) School of Medicine. He is widely recognised in the field of guidelines, quality measurement, and evidence-based medicine. He is the immediate past-chair of the Clinical Guidelines Committee of the American College of Physicians.

After receiving a B.S. in both Biology and Chemistry at the University of Illinois, Dr. Shekelle earned his M.D. in 1982 from Duke University. He completed his internship, residency, and fellowship at UCLA, where he also obtained his M.P.H. in 1989 and his Ph.D. in 1993.

Dr. Shekelle is presenting in Plenary Panel 3 - Innovative Efficiencies in Guideline Development, Maintenance, and Adaptation: A Look to the Future, on Thursday, 29 September 2016 at 2:00 pm.



**Per Olav Vandvik, MD, PhD**, is associate professor at the Department of Health Management and Health Economics, University of Oslo, Norway. He is also researcher at the Norwegian Knowledge Centre for the Health Services in Oslo and acting consultant at the Department of Medicine, Lovisenberg Diaconal Hospital.

Dr.Vandvik spends most of his time heading a team dedicated to developing innovative solutions for providing clinicians and patients with trustworthy evidence summaries, guidelines and decision aids at the point of care ([www.magicproject.org](http://www.magicproject.org)). More lately his work includes wide international collaboration to develop a Digital and Trustworthy Evidence Ecosystem. Dr.Vandvik is a G-I-N Board of Trustees member and also a recognised teacher in evidence-based medicine and guideline methodology for clinicians and decision-makers in health care.

Dr. Vandvik is presenting in Plenary Panel 4 - Leveraging Technology to Promote Guideline Implementation, on Friday, 30 September 2016 at 10:30 am.



**Lelis Bauza Vernon, BA**, is chair of the Parent Advisory Council for the Neonatal Intensive Care Unit (NICU) at Baptist Children’s Hospital in Miami, Florida, U.S. Through the Council, she has worked for the past 8 years to create, grow, and coordinate educational and programmatic activities from a parent’s perspective to promote family-centered care in the NICU. She also actively participates and collaborates in specific study groups, including a NIH-funded study by Dr. Jochen Profit, MD, MPH at Stanford University, Division of Neonatal Medicine - Perinatal Systems Research to assess disparities in the quality of care in NICUs, she is currently serving as Faculty member in the Micro-premature Care Team at the Vermont Oxford Network, an exemplary organization that collects and feeds back NICUs clinical data from more than 90% of VLBW babies in the United States, in this role she helps guide quality improvement efforts and extract systematic learning for NICUs around the US. She is also a US Family representative in the Advisory Council for the Newborn Individualized Developmental Care and Assessment Program (NIDCAP) Federation International. In 2016, Lelis joined the American College of Physician’s Public Involvement Program as a public jury member for its Clinical Guidelines Committee.

Lelis’ commitment to advocating the family and patient voice is driven by her experiences as the mother of premature twins and the wife of a spinal cord injury patient. Lelis is originally from Argentina, studied in England, and has lived in Brazil, Venezuela and the United States.

Ms. Vernon is presenting in Plenary Panel 1 - Individualizing Guidelines in an Era of Personalised Medicine on Wednesday, 28 September 2016 at 9:00 am.



**Dr. Diane Watson** was the inaugural Chief Executive Officer of the National Health Performance Authority - Australia’s national organisation established to monitor, and report on, the comparable performance of health careorganisations and the health system at the local level. This information is available on the [MyHospitals](http://MyHospitals) and [MyHealthyCommunities](http://MyHealthyCommunities) websites.

In 2015-16 she was co-chair of the Independent Hospital Pricing Authority and Australian Commission for Safety and Quality in Healthcare’s committee to explore the feasibility of implementing best practice pricing nationally, in tandem with quality and safety performance information in order to drive quality improvement.

Prior to her appointment at the Performance Authority, Diane was the inaugural Chief Executive Officer of the NSW Bureau of Health Information. Prior to working in Australia, she held management and senior scientist positions in Canada and the USA. In 2005, Diane was a Harkness Fellow in the International Health Policy Programme with the Commonwealth Fund.

Dr. Watson is presenting in Plenary Panel 1 - Translating Guidelines to Performance Measures in an Era of Accountability on Wednesday, 28 September 2016 at 2:30 pm.



**Professor Naohito Yamaguchi, MD, PhD**, graduated from Keio University School of Medicine, Japan, in 1978, and started his career as researcher in epidemiology and public health. Currently, he is professor and chair of Department of Public Health, Tokyo Women’s Medical University School of Medicine.

Prof. Yamaguchi has been serving as the Director of Minds Guideline Center, Japan, since its foundation in 2002. Minds Guideline Center was established by the Japan Council for Quality Health Care, a non-profit third party organization, with a full financial support by the Ministry of Health, Labor and Welfare, Japan, to promote evidence-based clinical practice in Japan. Minds Guideline Center functions as the clearinghouse of clinical practice guidelines developed in Japan; its website disseminates more than 160 clinical practice guidelines. Minds Guideline Center also has a wide range of guideline-related activities; it supports guideline developers by providing methodological guidance; it also supports hospitals and clinics for efficient guideline implementation; and it supports patients and practitioners for their utilization of clinical practice guidelines in share decision making.

Prof. Yamaguchi is currently serving as the chair of G-I-N Asia, which was founded in 2015.

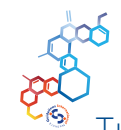
Professor Naohito Yamaguchi, MD, PhD, graduated from Keio University School of Medicine, Japan, in 1978, and started his career as researcher in epidemiology and public health. Currently, he is professor and chair of Department of Public Health, Tokyo Women’s Medical University School of Medicine.

Professor Yamaguchi is presenting in Plenary Panel 3 - Innovative Efficiencies in Guideline Development, Maintenance, and Adaptation: A Look to the Future, on Thursday, 29 September 2016 at 2:00 pm.



**Teun Zuiderent-Jerak PhD**, is LiU Research Fellow and Senior Lecturer in Science and Technology Studies at the Department of Thematic Studies – Technology and Social Change of Linköping University, Sweden. His research focuses on standardisation and quality improvement practices in health care and with a particular focus on medical knowledge. He co-chairs the G-I-N Working Group on Appraising and Including Different Knowledge (AID Knowledge). His publications can be found in the British Medical Journal, BMJ Quality and Safety, BMC Medical Research Methodology, Health Care Analysis, Health Economics, Policy and Law, Health Expectations, Health Policy, Human-Computer Interaction, Science as Culture, Science, Technology, and Human Values, Social Science & Medicine, and Social Studies of Science. His book Situated Intervention; Sociological Experiments in Health Care was published in 2015 by the MIT Press.

Mr. Zuiderent-Jerak is presenting in Plenary Panel 2 - Incorporating Alternative Forms of Evidence into Guidelines, on Thursday, 29 September 2016 at 8:30 am.



# Programme Agenda

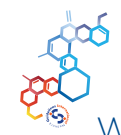
## Guidelines International Network 2016 Conference Programme Overview

Legend: Meeting rooms are located in the following buildings: HH – Houston Hall; IR – Irvine Auditorium; CH – Cohen Hall

7:00 am – 6:00 pm HH – Reading Room	Conference Registration
9:00 am – 4:00 pm	Pre-Conference Courses
ECRI Institute	Pre-Conference Course 1 Streamlining Guideline Development: Creating an Efficient Systematic Process to Meet Time and Resource Constraints Transportation will depart from Houston Hall at 8:30 am. Return transportation will depart ECRI Institute at 3:30 pm.
IR – Café 58	Pre-Conference Course 2 Close Encounters of a Third Kind? Involving Patients and Consumers in Guideline Development: A Joint Workshop of G-I-N PUBLIC and CUE – Consumers United for Evidence Based Health Care
IR – Amado Recital	Pre-Conference Course 3 Individualising Guidelines (Development, Dissemination and Application) in Resource Constrained Settings: Challenges and Opportunities
HH – Bodek Lounge	Pre-Conference Course 4 GRADE and Guideline Development
4:15 pm – 4:45 pm HH – Bodek Lounge	G-I-N Annual General Meeting Registration
4:45 pm – 6:00 pm	G-I-N Annual General Meeting
6:00 pm – 6:30 pm HH – Bodek Lounge	G-I-Ntro
6:30 pm – 8:00 pm Penn Museum	Welcome Reception Penn Museum is located at 3260 South Street, Philadelphia, PA 19105



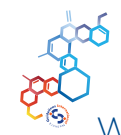
7:00 am - 6:00 pm HH – Reading Room	Conference Registration
7:30 am – 8:30 am HH – Hall of Flags	Continental Breakfast with Exhibitors
7:15 am – 8:15 am	G-I-N Regional Meetings (see schedule on Page 42)
8:30 am – 9:00 am IR – Main Hall	Welcome Ceremony
9:00 am – 10:30 am IR – Main Hall	Opening Plenary Session Individualising Guidance in an Era of Personalized Medicine <b>Moderators: Christine Laine; Amir Gaseem (USA)</b>
9:00 am	Session Welcome and Introductions
9:10 am	How Can We Individualize Guidelines in the Era of Personalized Medicine? <b>Douglas Owens, MD, PhD (USA)</b>
9:30 am	Personalised Medicine – Bright Future or False Dawn? <b>Fergus Macbeth, MA, DM, FRCP, FRCR (United Kingdom)</b>
9: 50 am	Guideline Development: A Patients Experience <b>Lelis Vernon (USA)</b>
10:10 am	Discussion
10:30 am – 11:00 am HH – Hall of Flags	Mid-Morning Refreshments



11:00 am - 12:30 pm Parallel Session 1

Room	IR – Amado Recital	IR – Café 58	HH – Bodek Lounge	IR – Main Hall	HH – Golkin Room	HH – Franklin Room	IR – G-16 Room	IR – G-07 Room
11:00 am – 12:30 pm	<b>Oral Abstract Session 1</b> Guideline Development, Maintenance, and Assessment <b>Moderator:</b> <b>Per Olav Vandvik (Norway)</b>	<b>Oral Abstract Session 2</b> Guideline Implementation <b>Moderator:</b> <b>Lubna Al-Ansary (Saudi Arabia)</b>	<b>Oral Abstract Session 3</b> Guidelines, Public Health, and Public Policy <b>Moderator:</b> <b>Joan Vlayen (Belgium)</b>	<b>Oral Abstract Session 4</b> Personalised Medicine and Guidelines <b>Moderator:</b> <b>Gillian Leng (United Kingdom)</b>	<b>Workshop 1</b> Can National Guidelines Be Developed in Areas Where the Evidence is Insufficient to Confirm the Effect? <b>Alexandra Karlén; Per-Henrik Zingmark</b>	<b>Workshop 2</b> G-I-N Tech I: Moving from Simple Text to Structured Digital Guidelines - Improving Tools, Methods and Implementation <b>Linn Brandt</b>	<b>Panel 1</b> US VA and DoD Guidelines: Challenges of Co-Morbid Military and Veteran Populations Across Dual Health Care Systems <b>Moderator: Clifford Goodman</b> <b>Panelists: Karen Drexler; Travis Harrell; Aniceto Navarro; Eric Rodgers</b>	<b>Panel 2</b> Transparency, Privacy, and Personal Disclosures in Guideline Development Panels <b>Moderator: Craig Umscheid</b> <b>Panelists: Brian Leas; Meghan Lane-Fall; Susan Norris; Holger Schünemann</b>
11:05 am	OR 01 - Updating NICE Guidelines - Health Economics and the First 2 Years of the Clinical Guidelines Update Programme <b>Paul Crosland</b>	OR 07 - Intellectual Property Considerations during the Development of Clinical Decision Support from Guidelines <b>Jeremy Michel</b>	OR 13 - The AGREE-HS: A Tool to Inform the Development, Reporting and Evaluation of Health Systems Guidance <b>Ivan Florez</b>	OR 19 - Practical Guidance for Using Existing Systematic Reviews in Developing Clinical Practice Guidelines <b>Stacey Uhl</b>				
11:17 am	OR 02 - Sensitivity of Treatment Decisions to Bias Adjustment in Network Meta-Analysis <b>David Phillippo</b>	OR 08 - Factors Affecting Cardiology Guidelines' Implementation in 56 Countries in Europe and the Mediterranean Basin <b>Celine Carrera</b>	OR 14 - Updating the Botswana Primary Care Guidelines: Lessons Learned from Resource Limited Settings <b>Billy Tsima</b>	OR 20 - Rating Recommendations from Two or More Guidelines <b>Brian Alper</b>				
11:29 am	OR 03 - Framework for Enhancing Clinical Practice Guidelines through Continuous Patient and Public Engagement <b>Melissa Armstrong</b>	OR 09 - Performance Based Financing and Clinical Practice Guidelines in Primary Health Care in Cameroon <b>Patrick Okwen Mbah</b>	OR 15 - Relation between Research Prioritization by Health Funds and Knowledge Gaps in Guidelines <b>Dieuwke Leereveld</b>	OR 21 - Rationale and Process for Prioritisation of National Clinical Guidelines <b>Rosarie Lynch</b>				
11:41 am	OR 04 - Guidance for Modifying the Definition of Diseases: A Checklist <b>Per Olav Vandvik</b>	OR 10 - Development of Guideline-based Clinical Performance Measures for Management of Hip Fractures in the Elderly <b>Jacqueline Ryan</b>	OR 16 - Mammography Policy: Ethics & Informed Consent <b>Harald Schmidt</b>	OR 22 - Patient-oriented Tools that could be Packaged with Guidelines to Promote Self Management: A Meta-Review <b>Anna Gagliardi</b>				
11:53 am	OR 05 - Reasons that the World Health Organization Guidelines are not Approved by the Guidelines Review Committee <b>Teegwende Porgo</b>	OR 11 - What Happens when the Evidence Conflicts with the Interests of Industry? A Case Example and Lessons Learned <b>Deborah Cummins</b>	OR 17 - De-adoption of Lower Value Care in Clinical Guidelines <b>Simone Dulmen</b>	OR 23 - Multivariate Risk Assessment and Risk Stratification in the U.S. Preventive Services Task Force (USPSTF) Portfolio <b>Corinne Evans</b>				
12:05 pm	OR 06 - The Use of Modeling in Published Practice Guidelines: A Survey <b>Veena Manja</b>	OR 12 - Tailoring Guideline Recommendations into a Format for the Public <b>Nancy Santesso</b>	OR 76 - Extended Strategies for Declaration of Interests and Management of Conflicts in Scientific Conferences <b>Richard Griebelow</b>	OR 24 - Supporting Shared Decision Making In Clinical Practice: identifying the evidence base for patient decision aids <b>Jane Cowl</b>				
12:17 pm	Discussion	Discussion	Discussion	Discussion				



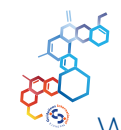


12:30 pm – 1:30 pm <i>HH – Hall of Flags</i>	Box Lunches
1:00 pm – 2:00 pm <i>HH – Hall of Flags</i>	Poster Session 1
1:00 pm – 2:00 pm	G-I-N Working Group Meetings (see schedule on Page 42)
<b>2:30 pm – 4:00 pm</b>	<b>Plenary Panel 1</b>
<i>IR – Main Hall</i>	Translating Guidelines to Performance Measures in an Era of Accountability <b>Moderators: Helen Burstin (USA); Ina Kopp (Germany)</b>
2:30 pm	Welcome and Introductions
2:40 pm	Improving Transparency, Accountability, and Quality and Safety Standards in Australia <b>Diane Watson, PhD (Australia)</b>
3:00 pm	Quality Payment Programme <b>Kate Goodrich, MD (USA)</b>
3:20 pm	Translating Clinical Guidelines into Performance Measurements - The Challenge of Being Both Relevant and Feasible <b>Anke Bramesfeld, MD (Italy)</b>
3:40 pm	Discussion
4:00 pm – 4:30 pm <i>HH – Hall of Flags</i>	Mid-Afternoon Refreshments
<b>4:30 pm – 6:00 pm</b>	<b>Parallel Session 2</b>



Room	<i>IR – Café 58</i>	<i>HH – Bodek Lounge</i>	<i>HH – Franklin Room</i>	<i>CH – Terrace Room</i>	<i>HH – Golkin Room</i>	<i>IR – G-07 Room</i>	<i>IR – G-16 Room</i>	<i>IR – Main Hall</i>	<i>IR – Amado Recital</i>
4:30 pm - 6:00 pm	<b>Oral Abstract Session 5</b> Guidelines Public Health and Public Policy <b>Moderator:</b> <b>Jane Jue (USA)</b>	<b>Oral Abstract Session 6</b> Guideline Development, Maintenance, and Assessment <b>Moderator:</b> <b>Sue Huckson (Australia)</b>	<b>Workshop 3</b> G-I-N Tech II: The Interaction Between Structured Digital Systematic Reviews and Guidelines: Shaping the Future <b>Presenter:</b> <b>Linn Brandt</b>	<b>Workshop 4</b> Appropriate Use Criteria Development and Dissemination <b>Presenter:</b> <b>Jayson Murray</b>	<b>Workshop 5</b> Patient and Other Stakeholders Views and Experiences: Crowdsourcing Initiative for an Online Free Access Database <b>Presenter:</b> <b>Hector Pardo-Hernandez</b>	<b>Workshop 6</b> Putting the ADAPTE Framework into Action <b>Presenter:</b> <b>Lubna Al-Ansary</b>	<b>Workshop 7</b> Software Tools and Action Statement Profiles To Facilitate Guideline Development <b>Presenter:</b> <b>Richard Shiffman</b>	<b>Panel 3</b> Working Together to Identify Outcomes that Matter <b>Moderator:</b> <b>Elise Berliner</b> <b>Panelists:</b> Peter Tugwell; Paula Williamson; Sean Tunis; Stephanie Wissig	<b>Panel 4</b> Tailoring Cochrane Reviews to Meet the Needs of Guideline Developers <b>Moderators:</b> <b>Marguerite Koster; Charlotte Pestrige</b> <b>Panelists:</b> <b>Caroline Hodt-Billington; Rachel Churchill; Karla Soares-Weiser; Nancy Owens</b>

Note: Oral Abstracts for Sessions 5 and 6 are on page 30



4:30 pm – 6:00 pm Parallel Session 2 (cont.)

Room	IR – Café 58	HH – Bodek Lounge
4:35 pm	<b>Oral Abstract Session 5</b> OR 25 - WikiRecs: Rapid Creation and Dissemination of Evidence Summaries and Trustworthy Recommendations to Point of Care <b>Per Olav Vandvik</b>	<b>Oral Abstract Session 6</b> OR 31 - Judging Financial Conflicts of Interest: What Counts? <b>Robert Kunkle</b>
4:47 pm	OR 26 - Validity and Reliability Testing of the AGREE-REX, A Tool to Evaluate the Implementability of Recommendations <b>Melissa Brouwers</b>	OR 32 - Evidence Based Practice Scholars Programme <b>Nancy Allen</b>
4:59 pm	OR 27 - The Current Status of Patient Guidelines: A Review <b>Xiaoqin Wang</b>	OR 33 - IOM standards 7 years later: “checking the box” on patient engagement <b>Melissa Armstrong</b>
5:11 pm	OR 28 - Developing and Testing the National Guideline Clearinghouse Extent Adherence to Trustworthy Standards Instrument <b>J. Jane Jue</b>	OR 34 - The Development of an International Practice Guidelines Registry Platform <b>Yaolong Chen</b>
5:23 pm	OR 29 - Getting the O in PICO Right for Trustworthy Recommendations <b>Holger Schünemann</b>	OR 35 - Development of PRISMA extension for Systematic Reviews of Complex Interventions <b>Meera Viswanathan</b>
5:35 pm	OR 30 - Using Text Mining to Facilitate Study Identification in Public Health Systematic Reviews <b>Elizabeth Shaw</b>	OR 36 - A Systematic Review of COPD Patients' Values and Preferences: Quantitative Studies on Outcome Importance <b>Yuan Zhang</b>

6:00 pm Evening at Leisure



7:00 am - 6:00 pm Conference Registration

HH – Reading Room

7:30 am – 8:30 am Continental Breakfast with Exhibitors

HH – Hall of Flags

7:15 am – 8:15 am G-I-N Regional Meetings (see schedule on Page 42)

8:30 am - 10:00 am Plenary Panel 2

IR – Main Hall

Incorporating Alternative Forms of Evidence into Guidelines  
**Moderators: Sonja Kersten (The Netherlands); Susan Norris (Switzerland)**

8:30 am Welcome and Introductions

8:40 am Never Mind the Qualitative – Feel the Depth! Incorporating Qualitative Evidence on Intervention Feasibility, Acceptability and Implementation in Guideline Development  
**Jane Noyes, DPhil (United Kingdom)**

9:00 am Guidelines, Personalised Healthcare and Real World Data  
**Martin Kohn, MD (USA)**

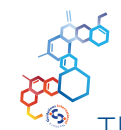
9:20 am The Pitfalls and Promises of Appraising and Including Different (AID) Knowledge  
**Teun Zuiderent-Jerak, (Sweden)**

9:40 am Discussion

10:00 am – 10:30 am Mid-Morning Refreshments

HH – Hall of Flags

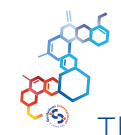




10:30 am - 12:00 pm Parallel Session 3

Room	HH – Bodek Lounge	IR – G-07 Room	IR – G-16 Room	CH – Terrace Room	HH – Golkin Room	HH – Franklin Room	IR – Amado Recital	IR – Café 58	IR – Main Hall
10:30 am - 12:00 pm	<b>Oral Abstract Session 7</b> Guideline Implementation <b>Moderator:</b> <b>Brian Leas (USA)</b>	<b>Oral Abstract Session 8</b> Guidelines, Public Health and Public Policy <b>Moderator:</b> <b>Sonja Kersten (Netherlands)</b>	<b>Oral Abstract Session 9</b> Guideline Development, Maintenance, and Assessment <b>Moderator:</b> <b>Stephanie Chang (USA)</b>	<b>Workshop 8</b> Considering How Patients Value Outcomes When Formulating Clinical Recommendations <b>Presenter:</b> <b>Hector Pardo-Hernandez</b>	<b>Workshop 9</b> Preparing Clinical Guidelines for Publication in Peer Review Journals <b>Presenter:</b> <b>Christine Laine;</b> <b>Amir Qaseem;</b> <b>Melissa Starkey;</b> <b>Darren Taichman</b>	<b>Workshop 10</b> Appraising and Including Different Knowledge in Guideline Development <b>Presenter:</b> <b>Elizabeth Shaw</b>	<b>Panel 5</b> Leveraging Resources to Develop and Disseminate High Quality Evidence-Based Guidelines <b>Moderator:</b> Ronald Seel <b>Panelists:</b> Ronald Seel; <b>Christine MacDonnell;</b> <b>Michael Choo</b>	<b>Panel 6</b> Transforming Patient Care: How Clinical Registries Impact Guideline Implementation <b>Moderator:</b> Elise Berliner <b>Panelists:</b> William Rich III; <b>Patricia Franklin;</b> Kathleen Hewitt; Louise Morgan	<b>Panel 7</b> The Importance of Being Precise - How Specificity Matters to Guideline and Performance Measure Developers <b>Moderator:</b> Caryn Davidson <b>Panelists:</b> Richard Shiffman; <b>Jeffrey Michel;</b> Caryn Davidson; Monica Nothacker
10:35 am	OR 37 - Guideline adherence: How do Boards of Directors Deal with It? A Survey in Dutch Hospitals? <b>Louise Blume</b>	OR 43 - Methodologies used in Adaptation of Health Related Guidelines: A Systematic Survey <b>Rima Abdul Khalek</b>	OR 49 - The COMET (Core Outcome Measures in Effectiveness Trials) Initiative: Core Outcome Sets for Clinical Guidelines <b>Paula Williamson</b>						
10:47 am	OR 38 - Innovative Dissemination of AAOS Clinical Practice Guidelines: An AHRQ Funded Initiative <b>Deborah Cummins</b>	OR 44 - UpPriority Project: Design and Implementation of an Updating Prioritization Tool <b>Laura Martinez Garcia</b>	OR 50 - An Online Survey to understand the Views of Future Priorities for Public Involvement in NICE Work <b>Jane Cowl</b>						
10:59 am	OR 39 - Developing Shareable Clinical Decision Support from Clinical Practice Guidelines <b>Jeremy Michel</b>	OR 45 - Clinical Practice Guidelines for Hypertension in Africa: Do We Have All the Ingredients for the Recipe? <b>Patrick Okwen Mbah</b>	OR 51 - To Update or Not To Update: Deciding if Clinical Guidelines should be Updated or Not <b>Katrina Sparrow</b>						
11:11 am	OR 40 - Influencing Practice, Influencing Change - Guideline Development Group Members as Agents of Change <b>Beatrice Cant</b>	OR 46 - The Quality of WHO Emergency Guidelines for the Ebola Virus Disease Outbreak in West Africa during 2013-2016 <b>Veronica Sawin</b>	OR 52 - Maintaining Wiki-Based, Dynamic Guidelines <b>Laura Wuellner</b>						
11:23 am	OR 41 - Assessing First-Time User Experiences of the ASH Pocket Guides App to Enhance User Adoption and Retention <b>Patrick Irelan</b>	OR 47 - Ranking Guidelines: A Prioritization Framework with Multicriteria Decision Analysis (MCDA) <b>Clarice Petramale</b>	OR 53 - The Paradoxical Challenge for Guideline Methods: The Person Centred Health Care Clinical Guideline <b>Sue Lukersmith</b>						
11:35 am	OR 42 - The American College of Physicians Review of Clinical Performance Measures: Summary of Methods <b>Sarah Dinwiddie</b>	OR 48 - Public Hospital Quality Information: Should You Trust Your Magazine or Your Morning Paper? <b>Joppe Tra</b>	OR 54 - A Cross-Sectional Study of Non-Financial Conflict of Interest <b>Xiaoyang Song</b>						
11:47 am	Discussion	Discussion	Discussion						



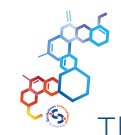


12:00 pm – 1:00 pm <i>HH – Hall of Flags</i>	Box Lunches
12:30 pm – 1:30 pm <i>HH – Hall of Flags</i>	Poster Session 2
12:30 pm – 2:00 pm	G-I-N Working Group Meetings (see schedule on Page 42)
<b>2:00 pm – 3:30 pm</b>	<b>Plenary Panel 3</b>
<i>IR – Main Hall</i>	Innovative Efficiencies in Guideline Development, Maintenance, and Adaptation: A Look to the Future <b>Moderators: Vivian Coates (USA); Duncan Service (United Kingdom)</b>
2:00 pm	Welcome and Introductions
2:10 pm	Keeping Guidelines Up to Date: Progress and Challenges <b>Paul Shekelle, MD, PhD (USA)</b>
2:30 pm	Maintaining the Currency of a Large Guidelines Portfolio; Necessity is the Mother of Invention <b>Mark Baker, MD, PhD (United Kingdom)</b>
2:50 pm	Internet-Based Support for Guideline Development, Maintenance, and Adaptation in Japan; Current Situation and Future Direction <b>Naohito Yamaguchi, MD (Japan)</b>
3:10 pm	Discussion
3:30 pm – 4:00 pm <i>HH – Hall of Flags</i>	Mid-afternoon Refreshments
<b>4:00 pm – 5:30 pm</b>	<b>Parallel Session 4</b>



Room	<i>HH – Bodek Lounge</i>	<i>IR – Café 58</i>	<i>IR – Main Hall</i>	<i>IR – Amado Recital</i>	<i>HH – Franklin Room</i>	<i>CH – Terrace Room</i>	<i>HH – Golkin Room</i>	<i>IR – G-07 Room</i>	<i>IR – G-16 Room</i>
4:00 - 5:30	<b>Oral Abstract Session 10</b> Personalised Medicine and Guidelines <b>Moderator: Corinna Schaefer (Germany)</b>	<b>Oral Abstract Session 11</b> Guideline Development, Maintenance, and Assessment <b>Moderator: Melissa Starkey (USA)</b>	<b>Panel 8</b> The Core Quality Measures Collaborative - Path to Alignment of Quality Measures <b>Moderator: Aparna Higgins</b> <b>Panelists: Kate Goodrich; Derek Robinson; Tommy Cross; Aparna Higgins</b>	<b>Panel 9</b> Translating Guidelines into Evidence-based Clinical Pathways to Support High Value Care <b>Moderator: Ron Keren</b> <b>Panelists: Jane Lavelle; Joseph Zorc; Craig Umscheid; Nikhil Mull</b>	<b>Workshop 11</b> Using Evidence Maps in SRDR to Efficiently Design Systematic Reviews <b>Presenter: Bryant Smith</b>	<b>Workshop 12</b> Guideline Collaboration: Making it Happen <b>Presenter: Marguerite Koster</b>	<b>Workshop 13</b> Systematically Derived Recommendation (SDR): A New Article Type <b>Presenter: Brian Alper</b>	<b>Workshop 14</b> A Hundred Ways to Produce Patient Versions of Guidelines: Sharing Experience and Providing Practical Advice <b>Presenter: Sabine Schwartz</b>	<b>Workshop 15</b> Guidelines as Basis for Decision Trees and Information Standards <b>Presenters: Thijs van Vegchel; Kees Ebben</b>

Note: Oral Abstracts for Sessions 10 and 11 are on page 36



4:00 pm – 5:30 pm Parallel Session 4 (cont.)

Room	HH – Bodek Lounge	IR – Café 58
	<b>Oral Abstract Session 10</b>	<b>Oral Abstract Session 11</b>
4:05 pm	OR 55 - Personalised Outcome Measurement? Differences in Patient Preferences for Outcomes of Hip/Knee Surgery <b>Diana M.J. Delnoij</b>	OR 61 - Can Priority-Funded NICE Research Topics have an Impact on Guidelines Recommendations? A Retrospective Study <b>Moni Choudhury</b>
4:17 pm	OR 56 - Electronic Publication of the Norwegian Clinical Guideline for Diabetes: A Step Toward Personalised Care <b>Monica Sorensen</b>	OR 62 - Making Disclosures by Guideline Panelists and Management of Financial Conflicts Rigorous and Transparent <b>Robert Kunkle</b>
4:29 pm	OR 57 - Cultural Factors, Ethnicity, Refugee and Migrant Health: Do Guidelines on Depression Address These Aspects? <b>Corinna Schaefer</b>	OR 63 - Review of Teaching Strategies and Existing CPG Courses for Effective Training in CPG Development Approaches <b>Janine Margarita Dizon</b>
4:41 pm	OR 58 - How Many Guidelines Considered Special Population in the Recommendations? <b>Qi Wang</b>	OR 64 - Reporting Items for Practice Guidelines in Healthcare (RIGHT) <b>Yaolong Chen</b>
4:53 pm	OR 59 - Shared Decision Making in a Guideline on Pregnancy and Work <b>Carel Hulsho</b>	OR 65 - Live Guideline Surveillance: The Future of Surveillance? <b>Emma McFarlane</b>
5:05 pm	OR 60 - Evidence Gathering for Guideline Development in the Management Rare Diseases: An Example from Hemophilia <b>Cindy Yeung</b>	OR 66 - Prioritizing PICO Questions within Guidelines: A New Approach <b>Wojtek Wiercioch</b>
5:17 pm	Discussion	Discussion

6:30 pm – 7:30 pm Shuttle transportation to the National Constitution Center  
Departs from Sheraton University City Hotel

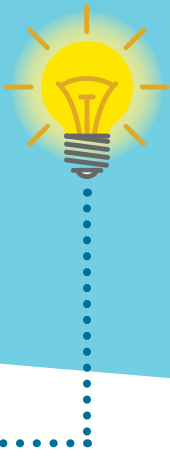
7:00 pm – 10:30 pm Gala Networking Event  
National Constitution Center

9:00 pm – 10:30 pm Shuttle to the Sheraton University City Hotel  
Departs from the National Constitution Center

Shuttles from the event will depart every 15 minutes.



WITH  
**18** MILLION  
diagnostic **errors** each year  
it's time for a new  
**SOLUTION**



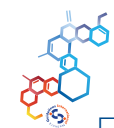
The Leader in **Diagnostic Accuracy**

- Quickly build a custom differential with our patient workup.
- Review therapy guidelines and expert clinical information.
- Access world's best medical images to compare variations of disease.

[sales@visualdx.com](mailto:sales@visualdx.com)

[visualdx.com](http://visualdx.com)





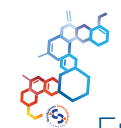
7:00 am Registration  
*HH – Reading Room*

7:30 am Continental Breakfast with Exhibitors  
*HH – Hall of Flags*

8:30 am – 10:00 am Parallel Session 5

Room	<i>HH – Bodek Lounge</i>	<i>IR – Café 58</i>	<i>HH – Franklin Room</i>	<i>IR – Amado Recital</i>	<i>IR – G-07 Room</i>	<i>IR – G-16 Room</i>	<i>IR – Main Hall</i>	<i>HH – Golkin Room</i>
8:30 am – 10:00 am	<b>Oral Abstract Session 12</b> Guideline Development, Maintenance, and Assessment <b>Moderator:</b> <b>Sue Phillips (Australia)</b>	<b>Oral Abstract Session 13</b> Personalised Medicine and Guidelines <b>Moderator:</b> <b>Michael Barry (USA)</b>	<b>Panel 10</b> G-I-N Multi-morbidity Working Group Panel Session: Addressing Multi-Morbidity in Guidelines <b>Moderator: Craig Robbins</b> <b>Panelists: Ilkka Kunnamo; Brian Alper; Jako Burgers; Mariska Tuut; Francois Schellevis; Wendy Bennett</b>	<b>Panel 11</b> Developing Guidelines for Complex Healthcare Interventions: Introducing PRISMA-CI <b>Moderator: Meera Viswanathan</b> <b>Panelists: Paul Shekelle; Christine Chang; Jeanne-Marie Guise; Susan Norris</b>	<b>Workshop 16</b> Mission Impossible? Individualising Guidelines for Patients with Multi-morbidity <b>Presenter: Jako Burgers</b>	<b>Workshop 17</b> 'Male or Female? That's the Question'. Sex-Differences in Patient Outcomes in Guideline Development <b>Presenter: Debby Keuken</b>	<b>Workshop 18</b> Talking G-I-N: Enhancing G-I-N's Mission through Experience Exchange <b>Presenters: Ina Kopp; Duncan Service</b>	<b>Workshop 19</b> G-I-N Website Resources and G-I-N/Cochrane TaskExchange Workshop <b>Presenters: Linn Brandt, Per Vandvik, Holger Schünemann</b>
8:35 am	OR 67 - Use of Text-Mining Tools for Systematic Reviews <b>Eileen Erinoff</b>	OR 73 - Benefit-Harm Analysis and Charts for Individualized and Preference-Sensitive Prevention <b>Cynthia Boyd</b>						
8:47 am	OR 68 - Creating Patient-Centered Guidelines by Giving Patients a Voice in Development <b>Kaitlyn Sevarino</b>	OR 74 - BMJ Best Practice: Patient Group Characteristics and Stratified Treatment a Point-of-Care Physician Tool <b>Sheila Feit</b>						
8:59 am	OR 69 - Accelerated Guideline Development Working Group: Developing the AGD Methods Manual <b>Sophie Blanchard</b>	OR 75 - Supporting Patient-Centred Application Of NICE Guidelines through Patient Decision Aids (PdAs) <b>Jane Cowl</b>						
9:11 am	OR 70 - Contextualization and Implementation of CPGs for Stroke Rehabilitation in a Developing Country Part 1 <b>Karen Grimmer</b>	OR 77 - Qualitative Evaluation of Public Involvement on the American College of Physicians Clinical Guidelines Committee <b>Kate Carroll</b>						
9:23 am	OR 71 - TANGO: Lessons Learned from a Project about Authoring and Integration of Digitally Structured National Guidelines <b>Linn Brandt</b>	OR 78 - Time to Consider Preferences More Explicitly with Benefit Harm Assessments to Inform Personalised Decision Making <b>Helene Aschmann</b>						
9:35 am	OR 72 - Network Meta-Analysis for Clinical Practice Guidelines - Case Study on Medications for Primary Open-Angle Glaucoma <b>Benjamin Rouse</b>	OR 18 - Implementation of a Quality Management System for Clinical Practice Guidelines in Germany <b>Cathleen Muche-Borowski</b>						
9:47 am	Discussion	Discussion						





Friday, September 30, 2016

10:00 am – 10:30 am Mid-Morning Refreshments  
*HH – Hall of Flags*

**10:30 am – 12:00 pm** Plenary Panel 4  
*IA – Main Hall*

Leveraging Technology to Promote Guideline Implementation  
**Moderators: Patrick Okwen Mbah (Cameroon), Craig Umscheid (USA)**

10:30 am Welcome and Introduction

10:40 am Mobile Applications to Support the Implementation of Guidelines  
**Lawrence Mbuagabaw, MD, PhD (Canada)**

11:00 am Title: Using Health IT to Improve Outcomes - A Federal Perspective  
**Kevin Larsen, MD (USA)**

11:20 am Digital and Trustworthy Evidence Ecosystem for Increased Value and Reduce Waste in Research and Health Care: Fact or Fiction?  
**Per Vandvik, MD, PhD (Norway)**

**12:00 pm – 12:30 pm** Closing  
*IR – Main Hall*



## Doctor Evidence Lunch & Technology Showcase at G-I-N 2016

**A Live Demonstration of the Doctor Evidence  
Innovative Evidence Review Technologies**

See this high quality, user-friendly,  
and complete solution to support living guidelines

**LUNCH DEMO**  
**Thursday, September 29, 2016**  
**12:30 pm – 1:30 pm, EDT**  
**Cohen Hall Terrace Room**

**VISIT: Doctor Evidence at Booth #9 in the exhibit hall of the G-I-N 2016 conference**

**Doctor Evidence** is a world leader in technology and services for evidence-based medicine with high quality, methodologically rigorous, and transparent evidence reviews that are dynamically-updatable to support living guidelines.

**GROWTH** (Guideline & Research Organizations Worldwide for Transparency & Harmonization) is a set of initiatives designed to improve communication, collaboration, and data sharing.

LEARN MORE: <http://www.growthevidence.com>

For a free live demo, email Sandy Lewis at [slewis@doctorevidence.com](mailto:slewis@doctorevidence.com).



## Searching for evidence-based information on cancer? **Cancer Guidelines Wiki** Web-based clinical practice guidelines - accessible **ANYWHERE, ANYTIME**

### Online, evidence-based recommendations for:

- Lung cancer treatment
- Advanced prostate cancer
- Teleoncology
- Early stage endometrial cancer
- Nutritional management for head and neck cancer
- Approach to gastroenteropancreatic neuroendocrine tumours
- Psychosocial management of AYAs diagnosed with cancer
- Surveillance colonoscopy
- Sarcoma
- Cancer pain management
- Early detection of cancer in AYAs
- Fertility preservation for AYAs diagnosed with cancer
- Barrett's oesophagus and early oesophageal adenocarcinoma
- PSA testing and early management of test-detected prostate cancer

**with more guidelines regularly being added**



Leveraging the power of the ACRselect Technology Platform

 **CareSelect**

EMR Delivered Enterprise Wide Clinical Decision Support

NATIONAL  
DECISION SUPPORT  
COMPANY

[www.nationaldecisionsupport.com](http://www.nationaldecisionsupport.com) | @ACRSelect

Wednesday, September 28, 2016

Time	Group	Location
7:00 am – 8:30 am	G-I-N Africa	IR – G16
7:15 am – 8:15 am	G-I-N Asia	IR – G07
7:15 am – 8:15 am	G-I-N Iberoamerica	HH – Class of 47
7:15 am – 8:15 am	G-I-N North America - Regional Community	HH – Bodek Lounge
1:00 pm – 2:00 pm	Accelerated Guideline Development	IR – Café 58
1:00 pm – 2:00 pm	Adaptation	HH – Griski Room
1:00 pm – 2:00 pm	AID Knowledge	HH – Brachfeld Room
1:00 pm – 2:00 pm	Allied Health	IR – G07
1:00 pm – 2:00 pm	G-I-N AHTA	HH – Franklin Room
1:00 pm – 2:00 pm	G-I-N/Cochrane WG	HH – Class of 47
1:00 pm – 2:00 pm	Performance Measures	IR – Amado Recital
1:00 pm – 2:00 pm	Updating Guidelines	IR – G16

Thursday, September 29, 2016

Time	Group	Location
7:00 am – 8:30 am	G-I-N North America - Steering Group	HH – Class of 47
7:15 am – 8:15 am	G-I-N ANZ	HH – Griski Room
7:15 am – 8:15 am	G-I-N Arab	HH – Brachfeld Room
7:15 am – 8:15 am	G-I-N Nordic	IR – G07
12:30 pm – 1:30 pm	G-I-N Public	HH – Griski Room
12:30 pm – 1:30 pm	G-I-N Tech	IR – Amado Recital
12:30 pm – 1:30 pm	Implementation	HH – Franklin Room
12:30 pm – 1:30 pm	LMIC	HH – Brachfeld Room
12:30 pm – 1:30 pm	Multimorbidity	IR – Café 58
12:30 pm – 1:30 pm	Overdiagnosis	IR – G16

The annual Guidelines International Network (G-I-N) conference is at the centre of G-I-N’s strategy around networking and provides the optimal opportunity for introductions to like-minded professionals, as well as taking part in various working group and regional community meetings, while attending the conference. G-I-N recognises that funding is not always available to those members from low and lower middle income countries and intends for the conference to be as accessible as possible for those members.

G-I-N is pleased to announce the recipients of the 2016 Grants:

**Dr. Olena Lishchyshyna****Dr. Patrick Okwen Mbah**

To view the profiles of the grant recipients, please visit the conference website [www.ginconference.net](http://www.ginconference.net)



You want to review the latest evidence and guidelines to get the most current information. You get that and more with *DynaMed Plus®*.

- Critically-appraised evidence
- Updated daily with new evidence
- Access to thousands of guidelines

the *DynaMed* process...introduces the latest medical evidence into patient care faster than ever before

Mario Tristan, M.Sc. Ph.D  
Chairperson and Director-General  
International Health Central America Institute  
Director of Cochrane Central America

If you want to learn more, join our Lunch Session on Wednesday, Sept 28 from 1-2pm. It will be held in the Cohen Hall Terrace Room.



Posters will be on display on the Hall of Flags Balcony and also the Bistro Area of Houston Hall. The poster prize will be announced at the end of the Plenary Panel on Friday, September 30, 2016. Poster presenters will be at their posters to answer questions during the sessions listed below.

Abstracts for poster presentations are included in the Abstract Book, which is available for download from the conference website:  
<http://www.ginconference.net/programme/2016abstracts>

Note: If a poster number is missing, it had been withdrawn by the author.



Poster Session 1 – Wednesday, September 28, 2016 – 1:00 pm – 2:00 pm  
*Hall Of Flags Balcony And Bistro Area*

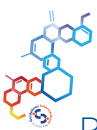
<b>PO A-01</b>	Comparison, Contrast, and Evidence Base of Opioid and Chronic Pain Guidelines Jeffrey Harris
<b>PO A-02</b>	Developing National Guidelines on Systems and Processes for Medicines Use and Practice: An Overview Emma McFarlane
<b>PO A-03</b>	Service Delivery Guidance – Approaches and Challenges Elizabeth Shaw
<b>PO A-04</b>	Economics in Guidelines – Where’s K-WALLY**? **QALY Elizabeth Shaw
<b>PO A-05</b>	Search for Clinically and Economically Effective Approaches to Lymphomas Treatment Olena Lishchyshyna
<b>PO A-06</b>	The Performance of Management Bundles and Widely Implementation of JPN Guidelines of Acute Pancreatitis in Japan Masahiro Yoshida
<b>PO A-07</b>	Systematic Review: Health Care Routes an Instrument of Implementation of Health Care Model Angela Perez
<b>PO A-08</b>	De Novo Development, Adoption and Adaptation of CPG, Methodologies, Advantages and Disadvantages Angela Perez
<b>PO A-09</b>	How could We Facilitate Patient Involvement at HAS? Joëlle André-Vert
<b>PO A-10</b>	Adaptation. Practical Experience from Nordic Hand Fracture Guideline Plia Vuorela
<b>PO A-11</b>	Health System Evidence: A Database for the Development of Policy Guidance Qi Wang
<b>PO A-12</b>	A Survey of Chinese Panelists Involved in the Development of Practice Guidelines Qi Wang
<b>PO A-13</b>	RAPADAPTE for Rapid High-Quality Guideline Development Brian Alper
<b>PO A-14</b>	Evolution of G-I-N North America E-GAPPS Conferences Peter Wyer
<b>PO A-15</b>	Implementation of GRADE in the Netherlands Ton Kuijpers
<b>PO A-16</b>	Development and Evaluation of Web-Based PICO Learning Tool Myonghua Park
<b>PO A-17</b>	Improving the Practice of Updating Guidelines Claire Stapon

<b>PO A-18</b>	Practical Guidance for Using Existing Systematic Reviews in Developing Clinical Practice Guidelines Stacey Uhl
<b>PO A-19</b>	Patient and public involvement in the process of development of clinical guidelines in Brazil Aline Silva
<b>PO A-20</b>	Previous Public Consultation: Developing Clinical Guidelines with Society Participation Vania Cristina Canuto Santos
<b>PO A-21</b>	Evidence-Based First Aid Guidelines for Flanders, Belgium Vere Borra
<b>PO A-22</b>	Time Registration for the Development of Evidence-Based First Aid Guidelines for Flanders (Belgium) Vere Borra
<b>PO A-23</b>	Recruitment of Patient Representatives for Guideline Panels Kendall Alexander
<b>PO A-24</b>	The American Society of Clinical Oncology’s Process for Managing Guideline Panel Conflicts of Interest (COI) Kaitlin Einhaus
<b>PO A-25</b>	Guideline Development for Members of a Professional Nursing Organization: Methodologies and Challenges Therese West
<b>PO A-26</b>	Should Quality Domain Weighted Meta-Analysis Be Used in Clinical Practice Guidelines? Patrick Donnelly
<b>PO A-27</b>	Incorporating Best Practices of Network Meta-Analysis (NMA) into Clinical Practice Guidelines (CPG) Peter Shores
<b>PO A-28</b>	Advancing the Quality of Research with Educational & Practical Guides for Researchers Kyle Mullen
<b>PO A-29</b>	A Web-based System to Ease the Burden of Guideline Development Ryan Pezold
<b>PO A-30</b>	Improved Strategies to make Appropriate Use Criteria (AUC) Easier to Understand and Process Ryan Pezold
<b>PO A-31</b>	Intellectual Conflict of Interest in Appropriate Use Criteria Jayson Murray
<b>PO A-32</b>	Hidden Bias in AAN Guidelines David Gloss
<b>PO A-33</b>	Disclosing Interests and Managing Conflicts for Guideline Development at the American College of Physicians Melissa Starkey
<b>PO A-34</b>	Incorporation of Patient Advocate Participants on Systematic Review and Guideline Development Expert Workgroups Lisa Moloney
<b>PO A-35</b>	Incorporating a Cost Literature Review in to Clinical Practice Guidelines Nilay Patel
<b>PO A-36</b>	Analysis of the Evidence Sources of Recommendations in Integrative Medicine Guidelines Xiaoqin Wang
<b>PO A-37</b>	Comparative Analysis of Guideline Development Handbooks from Different Guideline Organizations Xiaoqin Wang
<b>PO A-38</b>	How Many Traditional Chinese Medicine Guidelines Reporting Search Strategies: A Cross-Sectional Study Yao Liang
<b>PO A-39</b>	Minds’ Activities on Support for Guidelines Development in 2011 to 2015 Yosuke Hatakeyama
<b>PO A-40</b>	How to Overall Assess the Quality of Guidelines through the AGREE Instrument? Zixia Wang
<b>PO A-41</b>	The Evaluation for Quality of Evidence of Cost or Economic Outcomes through GRADE: A Survey of Cochrane Reviews Zixia Wang



<b>PO A-42</b>	Using a Stepped Approach to Systematic Evidence Review to Update NICE Guidelines on Smoking Cessation Elizabeth Shaw
<b>PO A-43</b>	A Tool to Adjust Effect Measures for Biases in Conducting Systematic Reviews of Comparative Effectiveness Research Noriko Kojimahara
<b>PO A-44</b>	Grading Systems of Quality of Evidence and Strength of Recommendation in Traditional Chinese Medicine Guidelines Xiaoqin Wang
<b>PO A-45</b>	The Development of Reporting Guideline for Acupuncture Systematic Review Xiaoqin Wang
<b>PO A-46</b>	Applicability: Methodology Needs for Evidence Review and Recommendation Development Annette Totten
<b>PO A-47</b>	NICE Guideline Surveillance: An Assessment of Surveillance Decisions Emma McFarlane
<b>PO A-48</b>	The Impact of Studies from Trial Register for the Results of Systematic Review: A Survey of Cochrane Reviews Dang Wei
<b>PO A-49</b>	Clearly Reporting of Recommendations in the Clinical Practice Guidelines Cpgs) In Chinese Mainland Deng Wei
<b>PO A-50</b>	G-I-N Updating Guidelines Working Group: The Roadmap Hector Pardo-Hernandez
<b>PO A-51</b>	“Who is Making Recommendations for my Healthcare?” Twitter Chat Analysis on Consumer Representation in Guidelines Reva Datar
<b>PO A-52</b>	Consideration of Other Types of Evidence and the Deliberative Process in the Development of Guidelines Christine Lobè
<b>PO A-53</b>	The Use of Modeling for Economic Evaluations in Practice Guidelines: A Systematic Survey of the Literature Veena Manja
<b>PO A-54</b>	Quality Assuring the Process and Methodological Aspects of NICE Clinical Guidelines Nichole Taske
<b>PO A-55</b>	Comparative Analysis of Evidence of Recommendations in Guidelines on Chinese Herbal Medicine and Acupuncture Nan Yang
<b>PO A-56</b>	CheckUp Implementation: A Methodological Survey of Updated Clinical Guidelines Laura Martinez Garcia
<b>PO A-57</b>	The Quality Evaluation of Clinical Practice Guidelines Published on Chinese Periodicals in 2015 Xiaoqin Wang
<b>PO A-58</b>	Question Selection in the Area of TCM for Cardiovascular Diseases with Systematic Review and GRADE Xiaoqin Wang
<b>PO A-59</b>	Systematic Analysis of Recommendations in Guidelines for Gout Qi Wang
<b>PO A-60</b>	Utilizing a National Database to Disseminate Best Practice CT Radiation Dose Optimization Karrin Weisenthal
<b>PO A-61</b>	Clinical Imaging Guidelines (CIG) Use in CDS: One Year Results with ACR Select Incorporation as CDS into EHRs Michael Bettmann
<b>PO A-62</b>	Guideline Adaptation and Implementation in Kazakhstan: Challenges and Successes in Central Asia Eddy Lang
<b>PO A-63</b>	Characteristics of Questionnaires used to Assess Barriers of Guideline Implementation: A Scoping Review Anna Gagliardi
<b>PO A-64</b>	Engaging with Health Professionals and Commissioners to Support Implementation of NICE Guidelines Elizabeth Shaw
<b>PO A-65</b>	Implementability Evaluation of Draft Recommendations using the Guideline Implementability Appraisal (GLIA) Tool Da Hyun Lyu

<b>PO A-66</b>	Quality Assurance of Evidence-Based Gastric Cancer Screening in Japanese Communities Chisato Hamashima
<b>PO A-67</b>	Implementing Guidelines into Chiropractic Teaching Clinics: A Mixed Methods Pilot Randomized Controlled Study Marie-Christine Hallé
<b>PO A-68</b>	Evidence Customisation and Implementation Planning: A Multi-Site Evaluation Study Craig Lockwood
<b>PO A-69</b>	Adapting Guideline-Based Decision Support for Palivizumab in Response to Updated Recommendations Jeremy Michel
<b>PO A-70</b>	Improving the Tools of Clinical Practice in the Republic of Kazakhstan Rano Jilkaidarova
<b>PO A-71</b>	Impact of an Evidence-Based Inpatient Utilization Management Model on a Private Brazilian Hospital System Maria Ellisa Pazos
<b>PO A-72</b>	Implementation of Sickle Cell Disease Guidelines: A Multi-Stakeholder Meeting Starr Webb
<b>PO A-73</b>	OrthoGuidelines: An AHRQ Funded Initiative to Incorporate AAOS Clinical Practice Guidelines into Episodes of Care Kaitlyn Sevarino
<b>PO A-74</b>	How Large, Private Healthcare Organizations Use Clinical Preventive Services Guidelines: A Qualitative Study Iris Mabry-Hernandez
<b>PO A-75</b>	Adherence in the United States to the Clinical Practice Guidelines on Tympanostomy Tubes in Children Iris Tam
<b>PO A-76</b>	Use of a Pathway Approach to Identify Areas for Indicator Development Elizabeth Shaw
<b>PO A-77</b>	Mobile Health (mHealth): Safety, Efficacy, Privacy, and Regulation Susan Birkhoff
<b>PO A-78</b>	Multimorbidity: A Challenge for Health Services for an Aging Population Mohammad Sakib
<b>PO A-79</b>	GAPSKO (Guidelines Appraisal System of KOREA); Means to Improve the Quality of CPG Appraisal of Korea You Lee
<b>PO A-80</b>	Mapping Evidence Types for Public Health and Social Care Guidelines Aedin McSloy
<b>PO A-81</b>	Understanding Pay for Performance Programmes in Healthcare Allison Low
<b>PO A-82</b>	Providing Epidermolysis Bullosa Patients with Appropriate Clinical Guidelines in Ukraine Olena Lishchyshyna
<b>PO A-83</b>	Populations to People, Lifestyle to Outcomes: A Whole-System Approach to Identifying Indicators on Prevention Elizabeth Shaw
<b>PO A-84</b>	A Very Low Number of National Adaptations of the WHO Guidelines for HIV and Tuberculosis Reported Their Processes Mohammad Godah
<b>PO A-85</b>	Implementation Strategy for Evidence-Based Decision Making kn Korea Yoon Jung Choi
<b>PO A-86</b>	VHA Hypoglycemia Safety Initiative: VA Great Lakes Health Care System Pilot Sandra Calenda
<b>PO A-87</b>	Measuring Preventable Outcomes: Global CV Risk Score (GCVR) Ben Hamlin
<b>PO A-88</b>	Guideline ‘Acute Surgery’: An (individualised) Classification System for Acute Surgery Patients Antoon Lamberts
<b>PO A-89</b>	Increasing the Visibility of Multiple Chronic Conditions Guidelines in the National Guideline Clearinghouse Lisa Haskell



- PO A-90** Terminology Management in Guideline Development: Early versus Late Binding of Synonyms  
Craig Whittington
- PO A-91** Development and Maintenance of Us Preventive Services Task Force Recommendations  
Kirsten Bibbins-Domingo
- PO A-92** Translating Guidelines into Practice: Closing Gaps in Patients Care  
Reva Bhushan

Poster Session 2 – Thursday, September 29, 2016 – 12:00 pm – 1:00 pm  
HALL OF FLAGS BALCONY AND BISTRO AREA

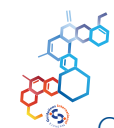
- PO B-01** Indicator Development in the CareTrack Kids Study: Processes, Provenance and Products  
Louise Wiles
- PO B-02** Contextualization and Implementation of CPGs for Stroke Rehabilitation in a Developing Country Part 2  
Consuelo Suarez
- PO B-03** Development and Implementation of a Biomedical Library’s Systematic Reviews Core  
Maylene Kefeng Qiu
- PO B-04** A Medical Librarian on the Team: An Essential Asset in the Development of a National Guideline  
Sherry Morgan
- PO B-05** Why You Don’t Need a Passport to Receive or Learn Resuscitation. The ILCOR Experience with Evidence-Based Guidelines  
Eddy Lang
- PO B-06** The Introduction of Clinical Protocols for the Treatment of Rheumatoid Arthritis (RA) in Health Care  
Olena Lishchyshyna
- PO B-07** Methods for Developing Software to Support Systematic Review Development: The JBI SUMARI Example  
Zachary Munn
- PO B-08** The Visibility of Equity and Socio-Economic Determinants (SED) In Australian Clinical Practice Guidelines (CPGs)  
Leena Gupta
- PO B-09** Strengthening the Foundation of a Guideline Development and Revision Programme - A Work in Progress  
Sarah Kraus
- PO B-10** Revision of the Dutch Method for Guideline Development, Implementation and Revision, A Policy Report  
Guus Meerhoff
- PO B-11** Quality Scoring of Randomized Controlled Trials for the Development of Evidence-Based Practice Guidelines  
Ulrike Ott
- PO B-12** Should the Time Spent in Peer Review be Considered when Grading Quality Evidence?  
Ulrike Ott
- PO B-13** Innovative Strategy for the Development and Updating of Individualised Nursing Best Practice Guidelines  
Michelle Rey
- PO B-14** International Federation of Red Cross and Red Crescent Societies Guidelines: An Overview and Quality Appraisal  
Vere Borra
- PO B-15** Stakeholder Surveys Guide Development of Clinical Practice Guidelines  
Adrah Leitner
- PO B-16** Using Legislation and National Policy Advice to Develop a National Guideline on Management of Controlled Drugs  
Emma McFarlane
- PO B-17** Applying GRADE Methodology to Non-Interventional Reviews: Diagnostic, Prognostic and Clinical Prediction Rules  
Rachel O’Mahony
- PO B-18** Adapting Quality Assessment Checklists to Prioritise Studies for Commentaries  
Katrina Sparrow
- PO B-19** Determining the Perspective for Economic Evaluations in NICE Clinical Guidelines – The Inclusion of Social Care  
Paul Crosland

- PO B-20** Prioritising Guideline Updates in Large and Complex Topic Areas  
Elizabeth Shaw
- PO B-21** Developing a Guideline for the Adoption and Diffusion of New Antimicrobials for the NHS: Using a ‘Call For Evidence’  
Emma McFarlane
- PO B-22** Living Guidelines: A New Model for Guideline Maintenance in Sweden  
Per-Henrik Zingmark
- PO B-23** Patients’ Preferences for Physiotherapy Treatment and Decision Making: A Qualitative Study  
Susanne Bernhardsson
- PO B-24** Development of Clinical Guideline for PTSD as a New Challenge for the Health System in Ukraine  
Olena Lishchyshyna
- PO B-25** The Role of the Stakeholders in the Development of Clinical Guideline for Patients with Down Syndrome in Ukraine  
Olena Lishchyshyna
- PO B-26** Is the National Guideline Clearinghouse a Trustworthy Source of Guidelines for Adolescent Anxiety and Depression?  
Kathryn Bennett
- PO B-27** Systematic Review Quality in Child and Adolescent Mental Health: A Systematic Review  
Kathryn Bennett
- PO B-28** Use of GRADE with Multiple Comparisons: An Exemplar in Early-Stage Hodgkin Lymphoma  
Fulvia Baldassarre
- PO B-29** The AGREE Reporting Checklist: A Tool to Improve the Reporting of Clinical Practice Guidelines  
Kate Kerkvliet
- PO B-30** Frameworks for Informing Coverage Decisions for Expensive but Effective and Desirable Healthcare Interventions  
Rebecca Morgan
- PO B-31** Developing a Comprehensive Priority-based Framework for Updating Clinical Practice Guidelines (CPGs)  
Afshin Jamshidi
- PO B-32** Impact of Real Time PCR in Early Diagnosis of Acute Bacterial Meningitis in Burkina Faso  
Emmanuel Sampo
- PO B-33** The Reporting Quality of Guideline Development Group Composition, Consensus Process and Conflicts of Interest  
Yoshihito Goto
- PO B-34** Trend of Descriptions of Palliative Care in Clinical Practice Guidelines of Cancer: A Content Analysis  
Kikuko Miyazaki
- PO B-35** Clinical Practice Guidelines for TM for Atopic Dermatitis: An Evidence-Based Approach  
Jiae Choi
- PO B-36** A Fast-Track Way of Adapting Clinical Practice Guidelines at King Saud University Medical City, Riyadh, Saudi Arabia  
Lubna Al-Ansary
- PO B-37** Declarations of Interest Management in Guidelines Developed by the World Health Organization  
Brittany Burda
- PO B-38** Development of Systematic Evaluation Method and Feedback System for Clinical Practice Guidelines in Japan  
Akiko Okumura
- PO B-39** To Use and Refer Existing International Guidelines in Chinese Guidelines: A Cross-Sectional Study  
Yaolong Chen
- PO B-40** The Citation Status of Systematic Reviews on Imaging Diagnosis in Clinical Practice Guidelines  
Mengshu Wang
- PO B-41** Recommendations on Imaging Diagnosis in Chinese Clinical Practice Guidelines: A Cross-Sectional Study  
Mengshu Wang
- PO B-42** Development and Improvement of the Clinical Protocol  
Nurgul Tashpagambetova
- PO B-43** The Introduction of CPGs Developed Based on the Recommendations of Clinical Guidelines into Practical Health Care  
Rano Jilkaidarova



<b>PO B-44</b>	Developing Service Guidance for Learning Disabilities and Behaviour that Challenges Elizabeth Shaw
<b>PO B-45</b>	Involvement of People with Learning Disabilities in Guidance Development - Challenges and Opportunities Elizabeth Shaw
<b>PO B-46</b>	Selection of Clinical Questions and Outcomes in Guidelines——A Cross-Sectional Study of Briefs In Gout Guideline Qi Wang
<b>PO B-47</b>	Temporal Trends in the Quality of Clinical Practice Guidelines Amy Tsou
<b>PO B-48</b>	Successful Implementation of Opioid and Chronic Pain Guidelines Jeffrey Harris
<b>PO B-49</b>	Developing a Web Based Interactive Programme to Guide the implementation of Evidence Based Dementia Care Guideline Myonghwa Park
<b>PO B-50</b>	Developing and Using Tools and Resources to Support Implementation of Guidelines on Medicines Use and Practice Elizabeth Shaw
<b>PO B-51</b>	Communicating Guideline Recommendations Using Graphic Narrative versus Text-Based Broadcast Screensavers Lauren Sinnenberg
<b>PO B-52</b>	Adapting Clinical Practice Guidelines: An Example of Introducing NICE Guidance on the Diagnosis of Autism in Libya Paul Crosland
<b>PO B-53</b>	Partnering with Youth and Families to Disseminate Mental Health Practice Guidelines: An Engagement Framework Kathryn Bennett
<b>PO B-54</b>	A Digital Environment Containing Acute Care Information from Guidelines. A Pilot in Neurology Antoon Lamberts
<b>PO B-55</b>	Prioritization Strategies for Updating Health Decision Making Tools: A Systematic Review Hector Pardo-Hernandez
<b>PO B-56</b>	Adaptation of Guideline-Gased Surgical Site Infection Definitions into Computable Rules Jeremy Michel
<b>PO B-57</b>	Recent Trends in the Usage of the National Guideline Clearinghouse and the National Quality Measures Clearinghouse Lisa Haskell
<b>PO B-58</b>	A Proposal for an Out-of- Range Glycemic Control Safety Measure for High Risk Older Adults with Diabetes Leonard Pogach
<b>PO B-59</b>	Fulfillment of National Recommendations for Cardiac Rehabilitation – Mapping Change after Launch of a New Guideline Cecilie Egholm
<b>PO B-60</b>	Assessment of Consensus Methods and Panel Compositions in Developing Guideline-Based Quality Indicators Kayo Ueda
<b>PO B-61</b>	How to Facilitate Utilization of the Clinical Practice Guidelines in the Primary Care? Jae G. Kim
<b>PO B-62</b>	Clinical Practice Guideline (CPG) Implementation for Diabetic Ketoacidosis (DKA) Emergency Department Treatment Jacqueline Bartlett
<b>PO B-63</b>	Reduction of Postoperative Nosocomial Infections in Adults - Improving Oral Hygiene Preoperatively Palle Larsen
<b>PO B-64</b>	The Degree of Knowledge of the CPG’s Purpose and their Relationship as a Primary Strategy Implementation Ojino Sosa
<b>PO B-65</b>	Implementation of an Evidence-Based Care Team within a Large Healthcare System Rebecca Guth
<b>PO B-66</b>	Perceived Barriers to Diabetes and Hypertension Guidelines Usage by Experience of Primary Care Physician Ein-Soon Shin
<b>PO B-67</b>	Relationship between Level of Application and Behavioral Changes on Use of a guideline among Korean Physicians Ein-Soon Shin

<b>PO B-68</b>	Citation Analysis for Recommendations in Clinical Practice Guidelines of Traditional Chinese Medicine (TCM) Deng Wei
<b>PO B-69</b>	Clinical Decision Support Increases Diagnostic Yield of Computed Tomography for Suspected Pulmonary Embolism Angela Mills
<b>PO B-70</b>	A Tailored Strategy for Implementing Clinical Guidelines in Danish Physiotherapy Private Clinics Emilie Thomsen
<b>PO B-71</b>	From Reporting Standards Towards International Best Practice for Guideline-Based Performance Measures Monika Nothacker
<b>PO B-72</b>	Guideline Development and Implementation in a State-Fund Workers’ Compensation System: The WA State Experience Zachary Gray
<b>PO B-73</b>	In Search of Quality Indicators for Down Syndrome Care: Guidelines are the Beginning Diana Delnoij
<b>PO B-74</b>	Launching a National System of Care for Patients with Orphan Diseases Olena Lishchyshyna
<b>PO B-75</b>	Guidelines: One Size Does Not Fit All Jodie Dvorkin
<b>PO B-76</b>	Use of GRADE Methodology In Low Evidence Settings: Experience with the Development of CPG in Colombia Fabio Sierra
<b>PO B-77</b>	Methodologies for Setting Health Research Priorities, and Methods for Decision-Making: A Systematic Review Juan Fuentes
<b>PO B-78</b>	Testing Treatments Interactive: An Evidence-Based Platform to Help Patients Understand Practice Guidelines Qi Wang
<b>PO B-79</b>	Rating Recommendations from Two or More Guidelines Brian Alper
<b>PO B-80</b>	Adaptation of Guidelines: What Methodological Frameworks have been Proposed? Andrea Darzi
<b>PO B-81</b>	First Responder Success Index: Measuring First Aid Success in an Era of New Guidelines in Uganda Mwebaze Kanaahe Brian
<b>PO B-82</b>	Zika Virus infection: Challenges in Developing Recommendations for Pregnant Women in Brazil Maria Ellisa Pazos
<b>PO B-83</b>	Evidence-Based Review of Current eEvidence on Off-Label Drug Use Xiaoqin Wang
<b>PO B-84</b>	Multicriteria Decision Analysis (MCDA) Framework for Guidelines Ranking: A Pilot Study in Brazil Clarice Petramale
<b>PO B-85</b>	Development of Guidelines for and by Nurses in the Netherlands Alke Nijboer
<b>PO B-86</b>	The Right Tool for the Right Job: A Framework for Patient Direct Knowledge Tools (Based on Guidelines) Dunja Dreesens
<b>PO B-87</b>	Digital Approaches to Analyzing Evidence in Support of Personalised Oncology Guidelines Rebecca Diekemper
<b>PO B-88</b>	Measurement of Clinical Performance with Clinical Guideline Apps Philipp Boerm
<b>PO B-89</b>	Making the Transition to “Living Guidelines”: Challenges and Opportunities Annette Totten
<b>PO B-91</b>	Guidance on Subpopulation Considerations in Systematic Reviews: Topic Scoping & Work Plan (Protocol) Development Jennifer Lin
<b>PO B-92</b>	Evidence Synthesis Practices for Clinical Practice Guideline Development Aysegul Gozu



## Agency for Healthcare Research and Quality

5600 Fishers Lane, Room #07N58A

Rockville, MD 20852, USA

Phone: (301) 427-1393

Email: [Shanika.Harris@ahrq.hhs.gov](mailto:Shanika.Harris@ahrq.hhs.gov)

Web: [www.ahrq.hhs.gov](http://www.ahrq.hhs.gov)

## Booth 14

The Agency for Healthcare Research and Quality's (AHRQ) mission is to produce evidence to make health care safer, higher quality, more accessible, equitable, and affordable, and work within the U.S. Department of Health and Human Services and with other partners to make sure that the evidence is understood and used.

## American College of Physicians

190 N. Independence Mall West,

Philadelphia, PA 19106, USA

Phone: (215) 351-2837

Fax: (215) 351-2594

Email: [tsiemion@acponline.org](mailto:tsiemion@acponline.org)

Web: [www.acponline.org](http://www.acponline.org)

## Booth 17

Check out ACP's guidelines programme and learn why Annals of Internal Medicine is where you should seek to publish your guidelines and evidence reviews.

## Börm Bruckmeier Publishing

Nördliche Münchner Str. 28

82031 Grünwald, Germany

Phone: +49 (89) 697781-29

Fax: +49 (89) 697781-28

Email: [philipp.boerm@media4u.com](mailto:philipp.boerm@media4u.com)

Web: [www.media4u.com](http://www.media4u.com)

## Booth 6

We are specialized in transforming association guideline content for healthcare professionals in various digital formats for interactive usage and strong dissemination.

## Cochrane

Cochrane, St Albans House, 57-59 Haymarket

London SW1Y 4QX United Kingdom

Phone: +44 (0)207 183 7503

Email: [cead@lists.cochrane.org](mailto:cead@lists.cochrane.org)

Web: [www.cochrane.org](http://www.cochrane.org) & [www.cochranelibrary.com](http://www.cochranelibrary.com)

## Booth 4

Cochrane is a global independent network of researchers, professionals, patients, carers, and people interested in health. Our contributors - 37,000 from more than 130 countries - work together to produce credible, accessible health information that is free from commercial sponsorship and other conflicts of interest. Many of our contributors are world leaders in their fields - medicine, health policy, research methodology, or consumer advocacy - and our groups are situated in some of the world's most respected academic and medical institutions.

Visit our website to learn more about who we are and what we do:

[www.cochrane.org](http://www.cochrane.org)

## Doctor Evidence, LLC

301 Arizona Ave, STE 301

Santa Monica, CA 90401, USA

Phone: (847) 498-4633

Fax: (847) 498-5111

Email: [slewis@doctorevidence.com](mailto:slewis@doctorevidence.com)

Web: [GROWTHevidence.com/](http://GROWTHevidence.com/) & [drevidence.com](http://drevidence.com)

## Booth 9

Doctor Evidence, a global leader in technological solutions for evidence-based medicine (EBM) since 2004, provides stakeholders across the health-care spectrum with timely and reliable research evidence and quality analytics to inform the best clinical decisions. Over 20,000 published clinical studies have been digitized creating dynamically-updatable and scientifically-curated data hubs.

## EBSCO Health

10 Estes Street

Ipswich, MA 01938, USA

Phone: (800) 653-2726

Fax: (978) 356-6565

Email: [information@ebSCO.com](mailto:information@ebSCO.com)

Web: [www.ebSCO.com](http://www.ebSCO.com)

## Booth 10

EBSCO Health, part of EBSCO Information Services, is a leading provider of clinical decision support solutions, healthcare business intelligence, and medical research information for the healthcare industry. Flagship products include *CINAHL® Complete*, *DynaMed Plus™*, *Nursing Reference Center Plus™*, *PEMSOft*, clinical eBooks and eJournals, licensed databases such as *MEDLINE®*, and EBSCO Discovery Service.

## ECRI Institute

5200 Butler Pike

Plymouth Meeting, PA 19462, USA

Phone: (610) 825-6000

Fax: (610) 834-1275

Email: [htais@ecri.org](mailto:htais@ecri.org)

Web: [www.ecri.org](http://www.ecri.org)

ECRI Institute, a nonprofit evidence-based health services research organization, offers customized support for clinical practice guideline and quality measure development, systematic reviews, and workshops.

## Evidence Partners

9 Wick Crescent

Ottawa, Ontario K1J 7H1 Canada

Phone: (613) 878-9201

Email: [info@evidencepartners.com](mailto:info@evidencepartners.com)

Web: [www.evidencepartners.com](http://www.evidencepartners.com)

## Booth 16

Evidence Partners is the creator of Distiller, the world's most widely used systematic review software, helping leading research organizations conduct better, faster systematic reviews.

## Guidelines International Network

Registered Office at J. & H. Mitchell W.S.,

51 Atholl Road

Pitlochry, Perthshire, PH16 5BU, Scotland.

Scottish Charity No: SC034047

Email: [office@g-i-n.net](mailto:office@g-i-n.net)

Web: [www.g-i-n.net](http://www.g-i-n.net)

## Booth 1

Meet Anne and Richard - the G-I-N Secretariat staff, to learn more about membership or set up introductions to the Working Group chairs to explore the global networking and collaboration opportunities.

## Global Evidence Summit

Cochrane South Africa

Francie van Zijl Drive

Parow Valley

Tygerberg, 7505, South Africa

Phone: +27 21 938 0438

Email: [Contact@globalevidencesummit.org](mailto:Contact@globalevidencesummit.org)

Web: [www.Globalevidencesummit.org](http://www.Globalevidencesummit.org)

## Booth 4

Using evidence. Improving lives. Cape Town, South Africa, 13-16 September 2017.

The Global Evidence Summit will be the first time that [Cochrane](#), [The Campbell Collaboration](#), [Guidelines International Network](#), [International Society for Evidence-based Health Care](#), and [Joanna Briggs Institute](#) have joined forces to promote evidence-informed decision-making worldwide.

## Kaiser Permanente

Care Management Institute

1 Kaiser Plaza, 16L

Oakland, CA 94612, USA

Phone: (510) 271-5799

Email: [cmi.communications@kp.org](mailto:cmi.communications@kp.org)

Web: [kpcmi.org](http://kpcmi.org)

## Booth 7

Founded in 1945, Kaiser Permanente is among America's leading health care providers and not-for-profit health plans serving more than 10.6 million members. Our mission is to provide high-quality, affordable health care services and to improve the health of our members and the communities we serve.

## National Decision Support Company

215 S Broadway , #412

Salem, NH 03079, USA

Phone: (609) 912-4972

Email: [info@nationaldecisionsupport.com](mailto:info@nationaldecisionsupport.com)

Web: [www.nationaldecisionsupport.com](http://www.nationaldecisionsupport.com)

## Booth 5

NDSC's CareSelect Clinical Decision Support solutions deliver national standard guidelines into physician workflows, giving providers greater stewardship over care to improve quality and compliance.

## Penn Medicine

3400 Spruce Street

Philadelphia, PA 19104, USA

Phone: (215) 662-4000

Web: [www.pennmedicine.org](http://www.pennmedicine.org)

## Booth 11

**Penn Medicine** consists of the Perelman School of Medicine and the University of Pennsylvania Health System. Penn Medicine is home to a wide variety of centers, programmes, and educational opportunities for clinicians, researchers and trainees, including: [Center for Evidence-based Practice \(CEP\)](#), supporting patient care quality, safety and value through evidence-based practice; CEP performs rapid systematic reviews to inform local practice and policy, translates evidence into practice through clinical decision support and pathways, and offers education in evidence-based quality improvement; [Master of Science in Health Policy Research](#), a multidisciplinary training programme focusing on health economics, health policy, qualitative and quantitative measurement, and statistics; [Master of Public Health](#), integrating research, education, and service learning in population health problems, and educating professionals from diverse disciplines in the core areas defining public health; [Center for Global Health](#), emphasizing a partner-based approach to improving health equity worldwide through enhanced public health awareness, access to care, discovery and outcomes based research, and educational programmes; [Center for Clinical Epidemiology and Biostatistics](#), facilitating collaborative research involving clinicians, biostatisticians, and epidemiologists, and providing training in biostatistics and epidemiology; and the [Office of Inclusion and Diversity](#), which produces innovative research and models of healthcare delivery, by fostering a vibrant inclusive environment and fully embracing diversity.



**ReedGroup, Ltd.**

10355 Westmoor Drive  
Westminster, CO 80021  
Phone: (303) 247-1860  
Email: [jguerriero@reedgroup.com](mailto:jguerriero@reedgroup.com)  
Web: [www.mdguidelines.com](http://www.mdguidelines.com)

ReedGroup's **MDGuidelines** is the industry's leading health management and workplace productivity solution, featuring disability duration tables, predictive modeling, analytic services, and evidence-based Practice Guidelines from ACOEM.

**Thomas Jefferson University  
Jefferson College of Population Health**

901 Walnut Street, 10<sup>th</sup> Floor  
Philadelphia, PA 19107, USA  
Phone: (215) 503-5305  
Fax: (215) 923-7583  
Email: [April.Smith@jefferson.edu](mailto:April.Smith@jefferson.edu)  
Web: [www.jefferson.edu/university/population-health.html](http://www.jefferson.edu/university/population-health.html)

Educates health professionals through graduate education in population health, health policy, healthcare quality and safety, and health outcomes research online via asynchronous delivery.

**UserGroup-Clin. Guideline Development**

Hopfenstr. 60,  
24103 Kiel, Germany  
Phone: +49 30 8445 3950  
Fax: +49 30 597 39 88  
Email: [t.karge@cgs-usergroup.de](mailto:t.karge@cgs-usergroup.de)  
Web: [www.guideline-services.com](http://www.guideline-services.com)

Our web-based Guideline Development Portal offers services and tools for efficient and transparent guideline development. We also support guideline groups in literature research and critical appraisal.

**Booth 15**



**Booth 13**



**It feels good to know we're all connected**

At Kaiser Permanente, our commitment to well-being goes beyond health care. We're also committed to improving the communities we serve. That's why we support the Guidelines International Network.

By working hard to make a difference Kaiser Permanente and the Guidelines International Network are making the international community a better place for all of us.

For more information, call  
1-800-464-4000 or visit [kp.org](http://kp.org)



# Exhibitors

## G-I-N 2016 Exhibitors

The Guidelines International Network gratefully acknowledges the support of the 2016 Annual Conference from our Exhibitors:

Agency For Healthcare  
Research and Quality (AHRQ)



EBSCO Health



ECRI Institute  
The Discipline of Science. The Integrity of Independence.



Annals of Internal Medicine®  
Established in 1927 by the American College of Physicians



Evidence Partners







be global. **be one.**



**oneworld** is proud to be your official airline alliance.

The **oneworld** network covers more than 1,000 destinations in 155 countries, so we can get you anywhere you need to be.

Learn more at [oneworld.com](http://oneworld.com)

**an alliance of the world's leading airlines working as one.**

airberlin American Airlines British Airways Cathay Pacific Finnair Iberia Japan Airlines LAN  
TAM Malaysia Airlines Qantas Qatar Airways Royal Jordanian S7 Airlines SriLankan Airlines



**oneworld** benefits are available only to passengers on scheduled flights that are both marketed and operated by a **oneworld** member airline (marketed means that there must be a **oneworld** member airline's flight number on your ticket). For information on **oneworld**, visit [www.oneworld.com](http://www.oneworld.com). airberlin, American Airlines, British Airways, Cathay Pacific, Finnair, Iberia, Japan Airlines, LAN, Malaysia Airlines, Qantas, Qatar Airways, Royal Jordanian, S7 Airlines, SriLankan Airlines, TAM Airlines and **oneworld** are trademarks of their respective companies. TAM Airlines (Paraguay) is currently not a part of **oneworld**.

# ECRI Institute knows guidelines!

As unbiased, independent clinical guideline experts,  
ECRI Institute can help you:

- ▶ Meet National Academy of Medicine standards and National Guideline Clearinghouse requirements
- ▶ Evaluate your current guideline development processes
- ▶ Perform systematic reviews and provide recommendations

**Stop by booth #16**

to learn more about ECRI Institute's custom capabilities or visit  
[\*\*ecri.org/taconsulting\*\*](http://ecri.org/taconsulting)

*ECRI Institute is proud to be a local host of G-I-N 2016*

**ECRI**Institute  
The Discipline of Science. The Integrity of Independence.

**Penn Medicine** consists of the **Perelman School of Medicine** (the nation's first medical school, consistently ranked among the top 5 U.S. medical schools) and the **University of Pennsylvania Health System** (the nation's first academic healthcare system, consistently recognized as one of the top 10 U.S. hospitals). **Penn Medicine** is a world-renowned academic healthcare system and home to a variety of centers, programs, and educational opportunities for clinicians, researchers, and trainees.

**Penn's Center for Evidence-based Practice (CEP)** supports patient care quality, safety and value through evidence-based practice. CEP performs rapid systematic reviews to inform local practice and policy, translates evidence into practice through clinical decision support and pathways, and offers education in evidence-based quality improvement. [www.uphs.upenn.edu/cep/](http://www.uphs.upenn.edu/cep/)

**Penn's General Internal Medicine (GIM) Fellowship and Research Training Program** prepares trainees for careers in academic general internal medicine. GIM fellows obtain an advanced degree - either the MSHP or the Masters of Science in Clinical Epidemiology (MSCE). GIM fellows are an integrated part of the Division of GIM, that offers a wealth of educational and research experiences for trainees. [www.uphs.upenn.edu/dgim/education](http://www.uphs.upenn.edu/dgim/education)

**Penn's Master of Public Health (MPH) Program** prepares students for leadership by integrating research, education, and service learning in population health problems; and aims to educate professionals from diverse disciplines in the core areas that define public health. [www.publichealth.med.upenn.edu](http://www.publichealth.med.upenn.edu)



**Penn's Office of Inclusion and Diversity (OID)** strengthens the quality of education, and produces innovative research and models of healthcare delivery, by fostering a vibrant inclusive environment and fully embracing diversity. [www.med.upenn.edu/inclusion-and-diversity/](http://www.med.upenn.edu/inclusion-and-diversity/)



**Penn's Master of Science in Health Policy Research (MSHP)** is a multidisciplinary training program that focuses on four major domains: health economics, health policy, qualitative and quantitative measurement, and statistics. [www.med.upenn.edu/mshp/](http://www.med.upenn.edu/mshp/)



**Penn's Center for Healthcare Improvement and Patient Safety (CHIPS) Fellowship** combines rigorous research training through the MSHP with formal and experiential training in quality improvement and patient safety. Fellows are fully integrated into the institutional quality and safety community at Penn Medicine or the Children's Hospital of Philadelphia. [www.med.upenn.edu/chips/](http://www.med.upenn.edu/chips/)



**Penn's Center for Clinical Epidemiology and Biostatistics (CCEB)** and Department of Biostatistics and Epidemiology promote the health of all people through scientific discovery, education, and dissemination of knowledge in biostatistics, epidemiology, and informatics. [www.med.upenn.edu/cceb/](http://www.med.upenn.edu/cceb/)

**Penn's Center for Global Health (CGH)** emphasizes a partner-based approach to improving health equity worldwide through enhanced public health awareness, access to care, discovery and outcomes based research, and comprehensive educational programs. [www.med.upenn.edu/globalhealth](http://www.med.upenn.edu/globalhealth)



# Penn Medicine