

# An Integrated Approach to Developing Health Care Guidelines



**ICSI**

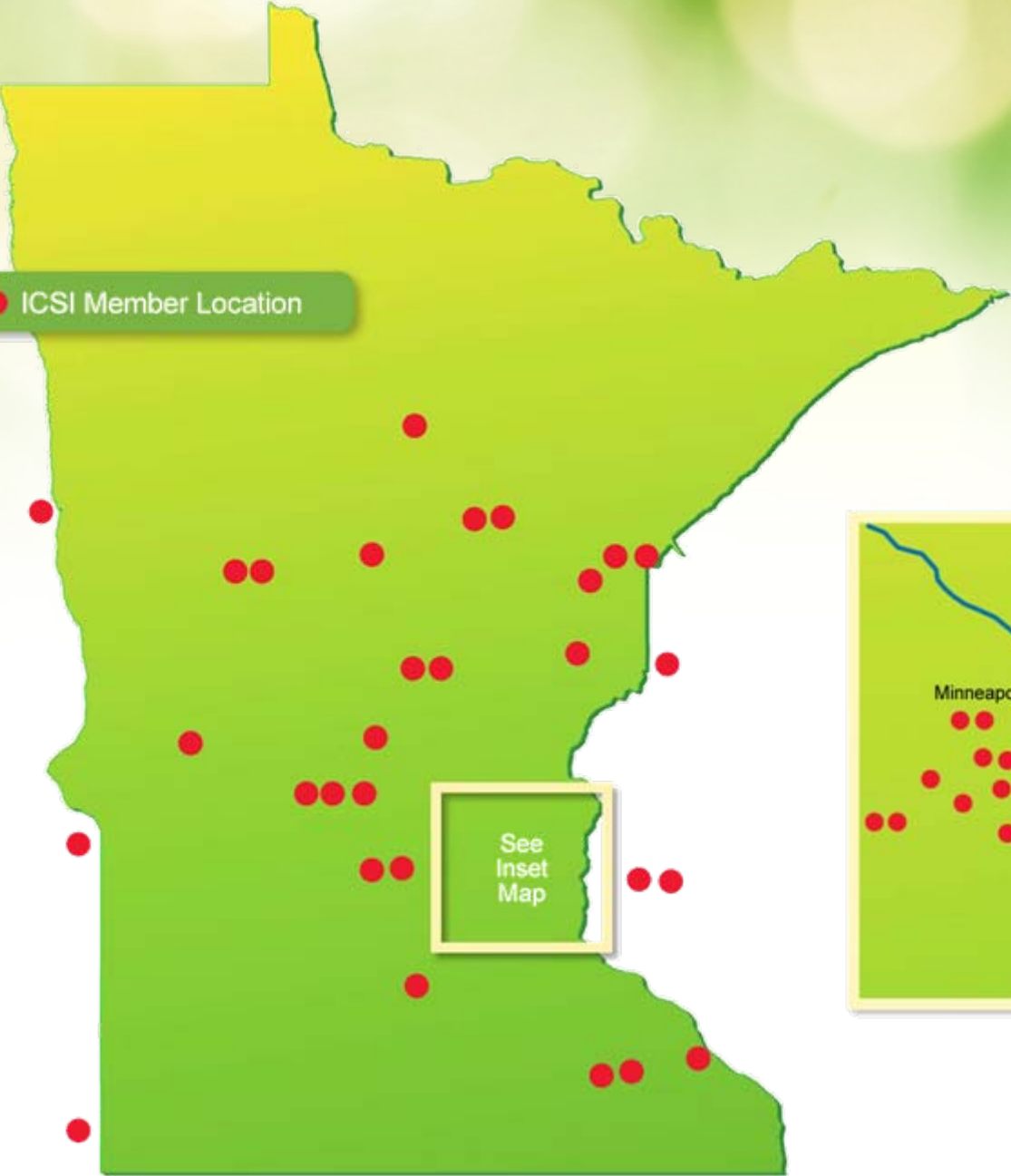
Transforming Health Care Through Collaboration

The presenter has no potential conflicts of interest to declare.

# Institute for Clinical Systems Improvement (ICSI)

- A collaboration of 60 medical groups & hospital systems representing >9,000 providers
- Sponsored by six health plans
- Established 1993
- The Upper Midwest's leading health care collaborative

● ICSI Member Location



# ICSI's Scientific Documents

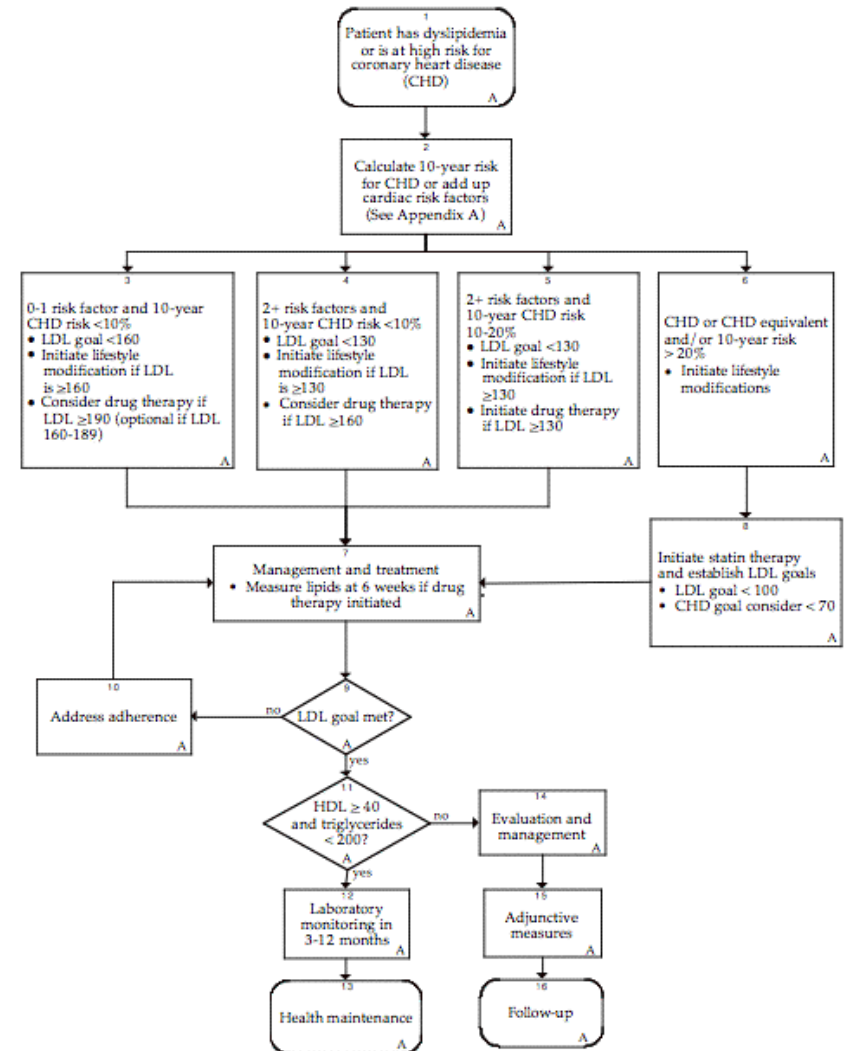
Designing systems of care:

- Health Care Guidelines
- Protocols
- Order Sets

Available at [www.icsi.org](http://www.icsi.org)

# Components

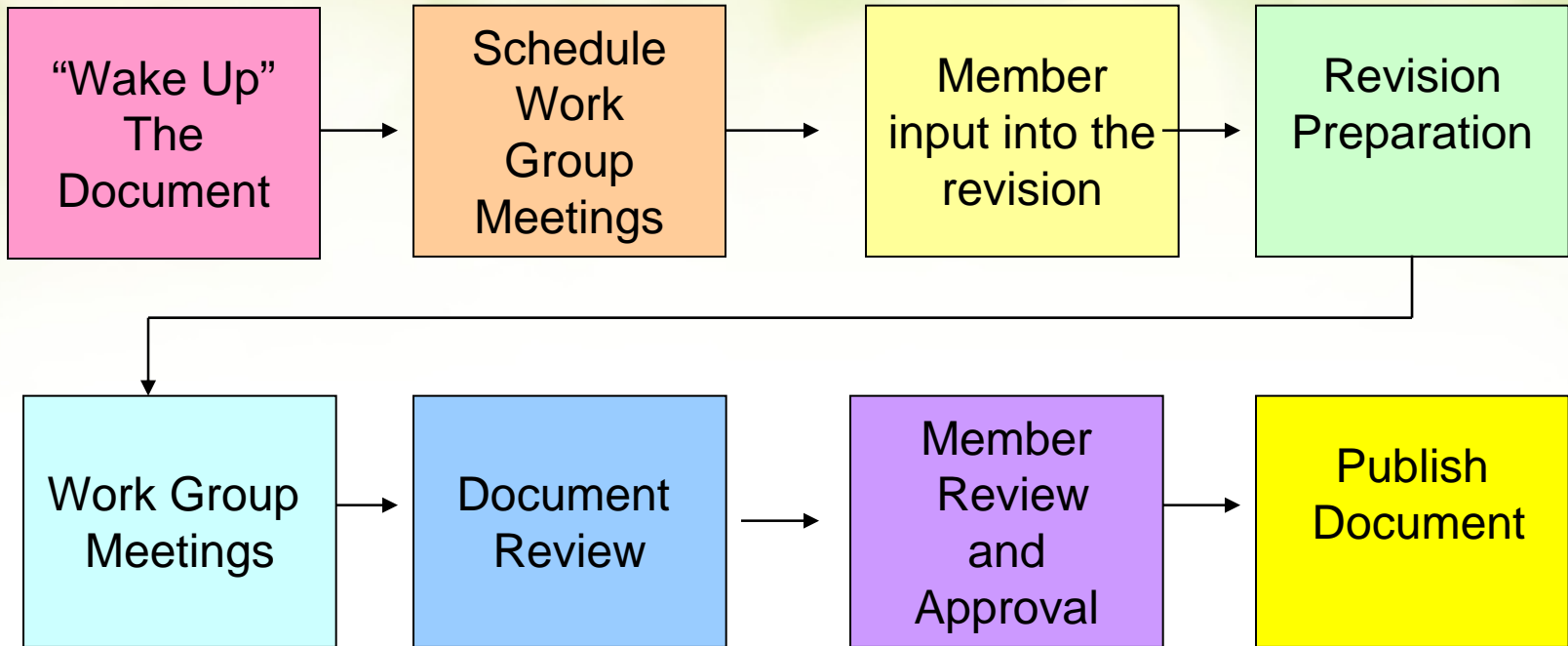
- Flow Chart
- Annotations
- Aims and Measures
- Implementation Recommendations
- Graded Evidence



# Potential Conflict of Interest

- Policy of transparency
- Requires disclosure of potential conflicts and competing interests
- Conflict of Interest Review Committee
- ICSI board ultimately determines what steps to take to ensure the integrity and reliability of the ICSI scientific documents.

# Revision Process



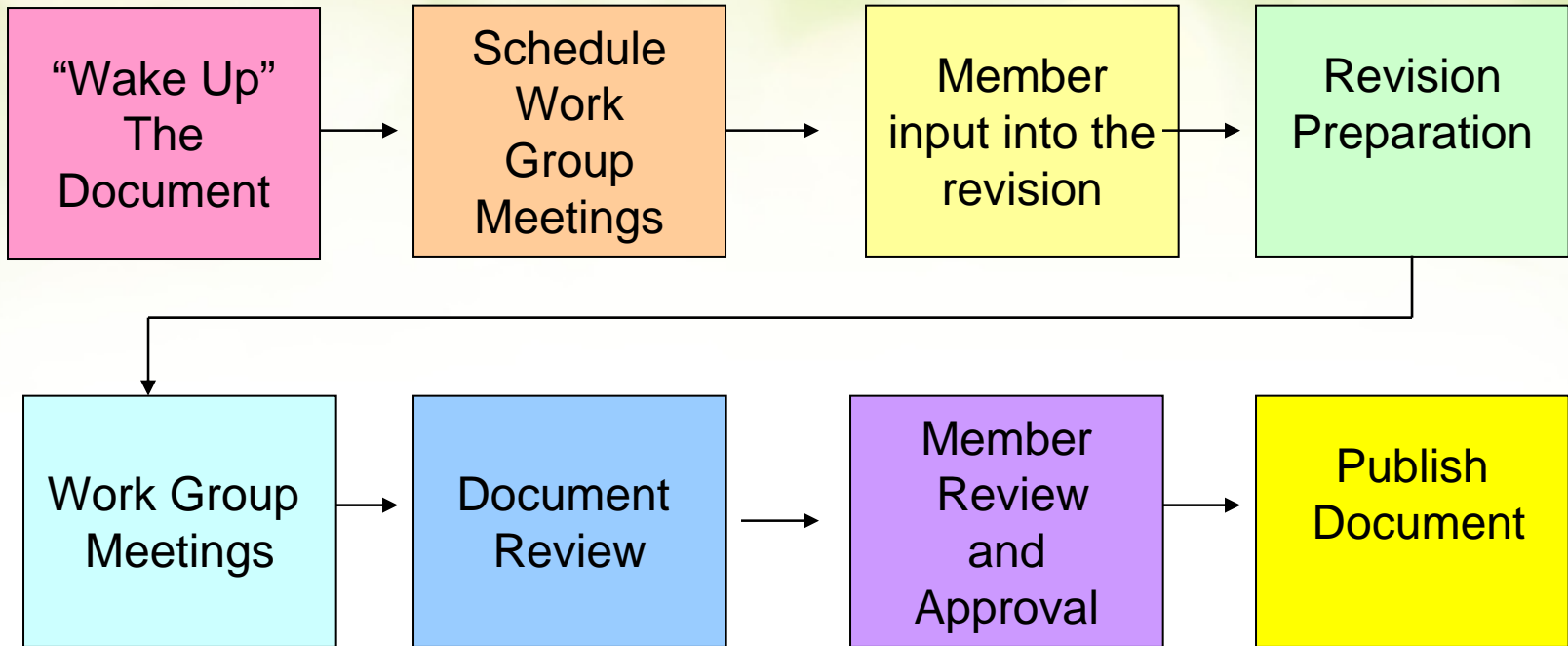


# Work Group Members

Recruited from member organizations:

- ❖ Work Group Leader - preferably MD
- ❖ Work group members selected based on focus of document
- ❖ Members may include primary care MD, specialist MD, nurse, pharmacist, radiologist, physical therapist, chaplain, social worker, dietician, public health, human factors expert, quality improvement staff.

# Revision Process



# Key Challenges

- Integration into patient care delivery
- Ease of access for clinicians
- Integration into EMR's
- Patient trust in evidence-based medicine
- Co-morbid conditions
- Frequency of revision
- Time
- Developing new evidence-based documents

Thank you.



**ICSI**

Transforming Health Care Through Collaboration